



# **ZEISS CARFIT** **Standard components catalog**

Status: September 2021



# Table of Contents

## ZEISS CARFIT Standard Components

---

Page 3	Carl Zeiss Fixture Systems Innovative components for constructing inspection equipment	
-----------	---	--

---

Page 4	ZEISS CARFIT Philosophie Raising the bar in fixtures technology	
-----------	--	--

---

Page 5	ZEISS CARFIT 3D design library The 3D design library in CATIA and construction guidelines	
-----------	--	--

---

Page 6 - 7	Application examples for standard components The 3D design library in CATIA and construction guidelines	
---------------	--	--

---

Page 8 - 13	Clamping and fastening elements	<b>1</b>
----------------	---------------------------------	----------

---

Page 14 - 21	Mounting and support elements	<b>2</b>
-----------------	-------------------------------	----------

---

Page 22 - 25	Adjustment elements	<b>3</b>
-----------------	---------------------	----------

---

Page 26 - 29	Shims	<b>4</b>
-----------------	-------	----------

---

Page 30 - 35	Sliding, articulating and change elements	<b>5</b>
-----------------	---	----------

---

Page 36 - 39	Extruded profiles	<b>6</b>
-----------------	-------------------	----------

---

Page 40 - 43	Connecting technology: extruded profiles	<b>7</b>
-----------------	--	----------

---

Page 44 - 47	Hole grid profiles	<b>8</b>
-----------------	--------------------	----------

---

Page 48 - 53	Connecting technology: Hole grid profiles	<b>9</b>
-----------------	---	----------

---

Page 54 - 59	Alignment angles, fastening bolts, base plates	<b>10</b>
-----------------	--	-----------

---

Page 60 - 63	Hydraulic lifting unit	<b>11</b>
-----------------	------------------------	-----------

---

Page 64 - 69	Accessories	<b>12</b>
-----------------	-------------	-----------

---

Page 70 - 73	Target set	<b>13</b>
-----------------	------------	-----------

---

Page 74 - 77	CARFIT lite: Profiles and support elements	<b>NEW</b> <b>14</b>
-----------------	---	----------------------

---

Page 78 - 81	CARFIT lite: Connecting technology	<b>NEW</b> <b>15</b>
-----------------	---------------------------------------	----------------------

---

Page 82 - 85	CARFIT lite: Accessories	<b>NEW</b> <b>16</b>
-----------------	-----------------------------	----------------------

---

Page 86 - 91	Index Item	
-----------------	---------------	--

---

Page 92 - 93	Zeiss CARFIT standard components Notes	
-----------------	---	--

---

# Carl Zeiss Fixture Systems

Innovative components for constructing inspection equipment

[back to Table of Contents](#)



Carl Zeiss Fixture Systems GmbH is your engineering and manufacturing specialist for fixture construction in industrial quality assurance.

Based on the ZEISS CARFIT system, the Tholey production plant in the heart of Europe develops and manufactures measuring devices for international manufacturers, notably in the automotive and aerospace industries. The production site also manufactures manual, semi-automatic, and fully automatic loading systems for quality assurance processes.

The ZEISS CARFIT system has been developed in-house and offers a standardized and modular component system for creating clamping devices, testing devices, and matching equipment. It is specifically suited to the car bodywork as well as interior and exterior components.

Universal fixtures are also increasingly used in other industries where there are high demands for measuring accuracy, stability, and precision.

Carl Zeiss Fixture Systems can look back on a tradition of more than 25 years in measurement and fixture technology. We further develop our ZEISS product portfolio by continuously incorporating the know-how acquired from our own devices and our international customers' diverse applications.

A consistently optimized portfolio ensures suitable solutions that meet the respective requirements of the market and high global innovation potential in constructing inspection equipment.



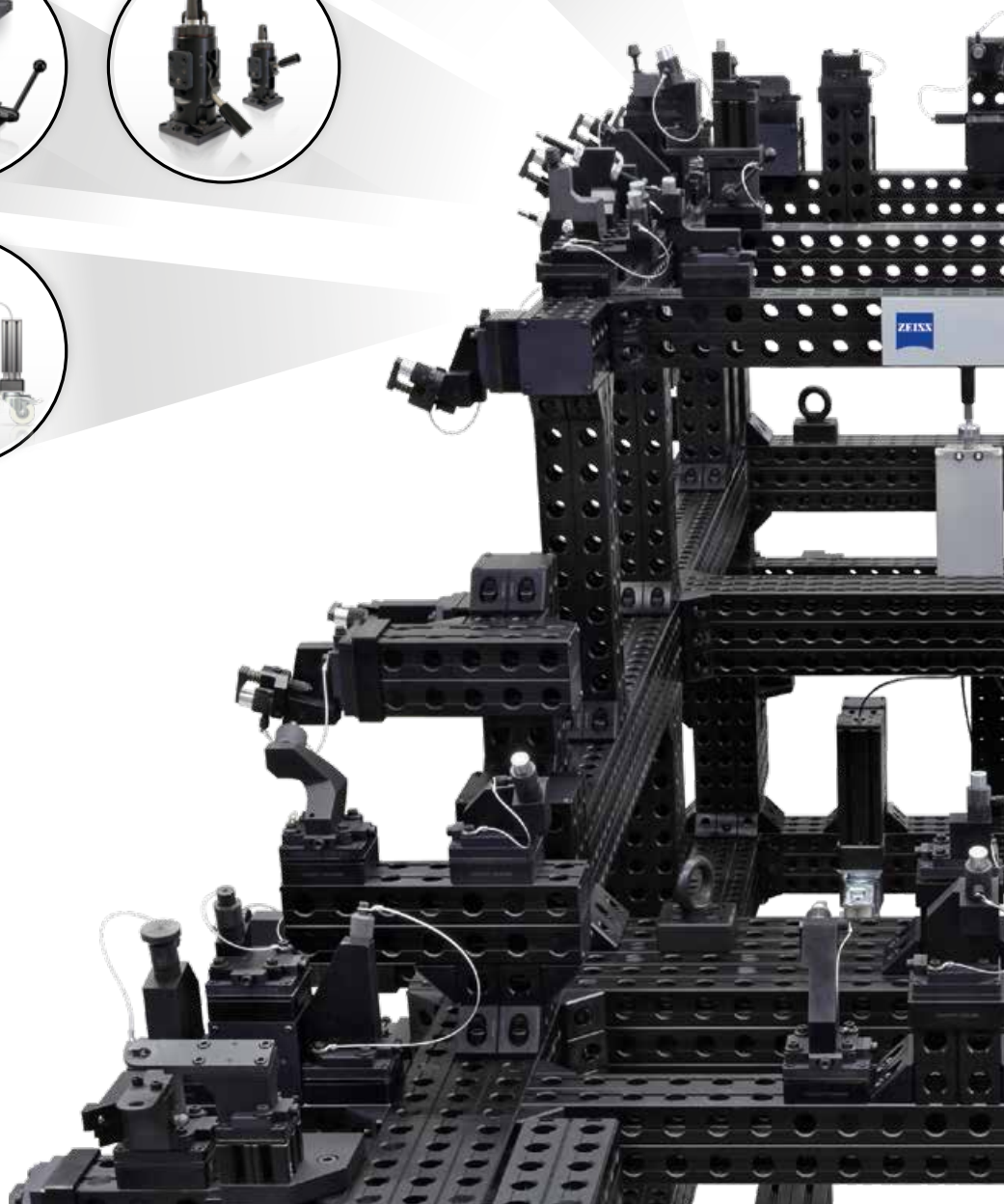
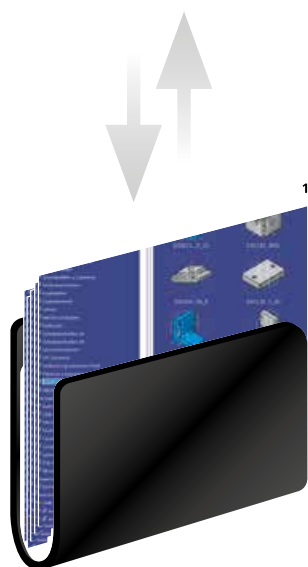
# The ZEISS CARFIT philosophy

Raising the bar in fixtures technology

[back to Table of Contents](#)

The modular ZEISS CARFIT clamping and fixturing systems enable you to manufacture customized fixtures on a standardized basis quickly and at an optimum price - from simple component fixtures all the way to complex inspection fixtures and meisterbock matching equipment. CARFIT is known for its unique connecting, fastening, and clamping technologies, all of which guarantee a high degree of precision, repeatability, and fast part change-out. The system

impresses with its ease of use, minimal set-up and modification costs, excellent stability and rigidity while providing easily accessible measuring points and precise coordination with measuring machines. The high level of standardization combines savings potential with the consistent quality of a universal technology for reliable processes. Maximum flexibility makes changes easier. Short delivery times and a comprehensive service worldwide are standard.





# The ZEISS CARFIT 3D design library

The 3D design library in CATIA and construction guidelines

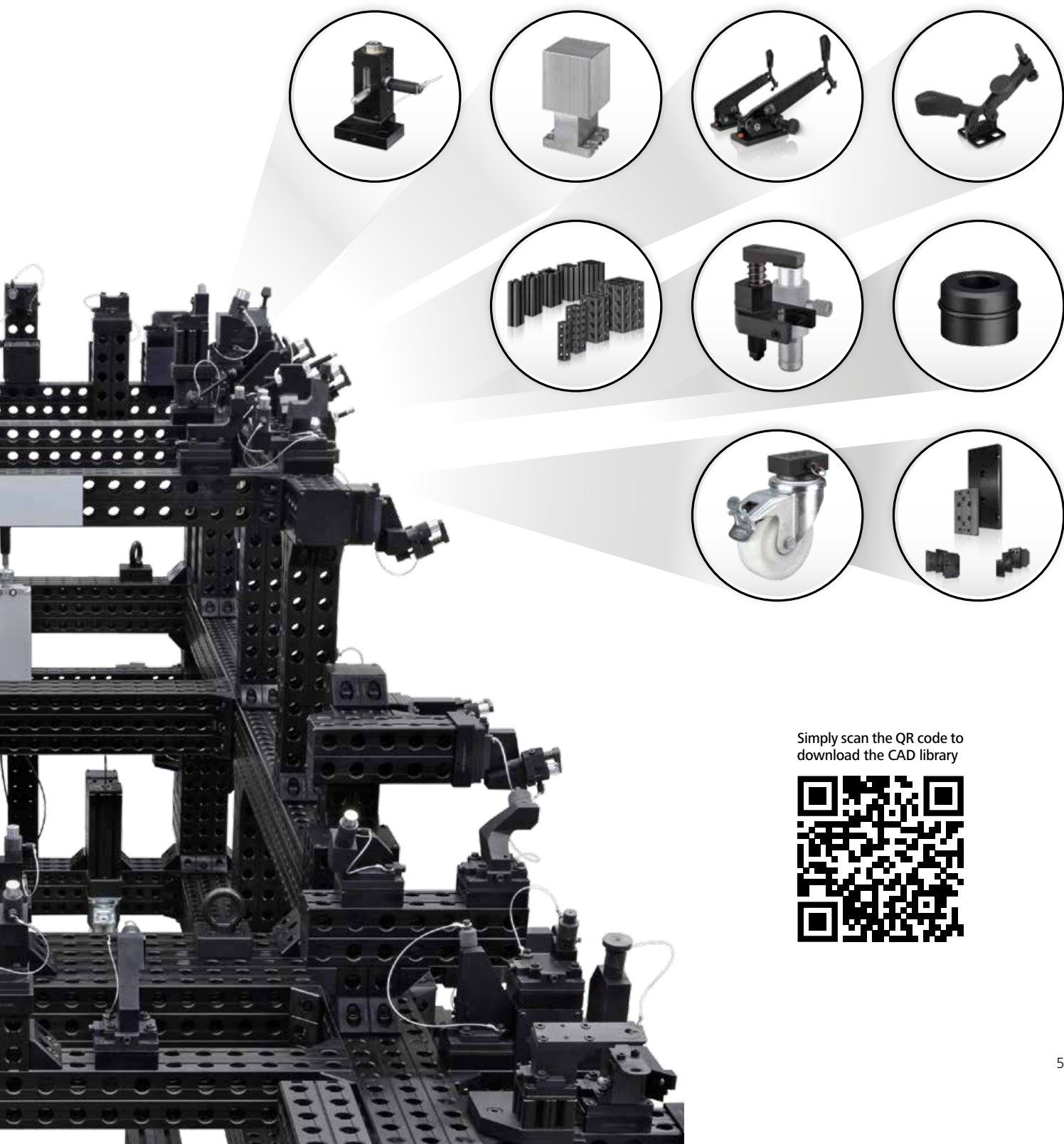
[back to Table of Contents](#)

The CAD library of all ZEISS CARFIT components ensures that customized fixtures are designed and produced quickly. All components are shown as 3D models in the CATIA<sup>1</sup> software. For more information about receipt, please contact:

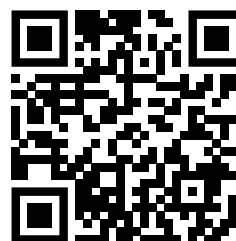
**[carfitvertrieb.metrology.de@zeiss.com](mailto:carfitvertrieb.metrology.de@zeiss.com)**

The desired version along with all current product data sheets for the particular standard components are available for

download free-of-charge. The ZEISS CARFIT 3D design library is a tried-and-tested tool for efficiently designing gauges, fixtures, and clamping equipment for prototype and serial construction. This way, you enjoy the full variety and all the benefits of the ZEISS CARFIT system along with the solutions-oriented know-how that comes from decades of experience designing professional fixtures.



Simply scan the QR code to download the CAD library



# Application examples for standard components

ZEISS CARFIT systems support the complete spectrum of fixturing requirements in pre-production series and series production.

The extraordinary variety of standardized components makes it easy to produce all kinds of inspection and fixturing devices: from measuring very small components to large-volume car body assemblies, from single to assembled parts, plastic and sheet-metal parts, and interior and exterior components.

Although these components have different primary areas of use, they are also intercompatible, ensuring that you have the optimum solution for every measuring job. You can choose systems featuring a CARFIT frame design with extruded and grid profiles as well as grid plate systems.

Specialized components make it possible to construct scanning fixtures for performing optical measurements from any position.

Where space is tight, a support and clamping system enables the flexible construction of component-specific fixtures.

The impressive functionality of the ZEISS CARFIT components means cost-effective set-up times, even for changing measuring processes and frequent component change-out. Part- and process-related modifications and extensions can be implemented quickly and easily.

A stable fixtures design, even for very large parts, as well as outstanding accessibility with complex arrangements are further hallmarks of ZEISS CARFIT quality.

ZEISS CARFIT is particularly well-suited for creating internal, lateral, external, and meisterbock matching equipment, reducing your costs and saving you time and resources during component part development and production ramp-up.

Standards, including meisterbock matching equipment screws, a hydraulic unit, quick-change technology, and guide systems, ensure that integrated systems meet your particular requirements.

The kit systems are your flexible, cost-effective companions for measuring prototypes and optimizing measurement processes in pilot production (see QR code).



Simply scan the QR code for OmniFix@Kit modular systems



With extruded profile



With hole grid profile



System for fixturing devices and testing equipment featuring a **framework design** and extruded or hole grid profiles



System for **optical** measurements



**Support and clamping system** – space-saving and flexible

With extruded profile



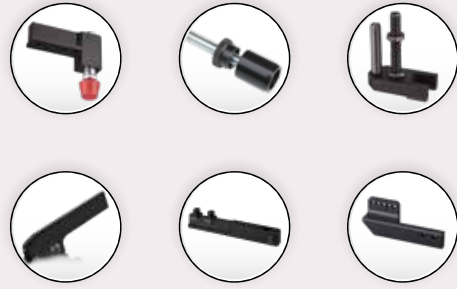
With hole grid profile



System for **matching equipment** with extruded or hole grid profiles



# CLAMPING AND FASTENING ELEMENTS





# 1 Clamping and fastening elements

ZEISS CARFIT standard components

[back to Table of Contents](#)



3D holder,  
base unit

ZEISS no.: 600062-0000-824



3D holder,  
locating bolt

ZEISS no.: 600062-0000-825



Fork head,  
10 mm

ZEISS no.: 600062-0000-719



Fork head,  
15 mm

ZEISS no.: 600062-0000-720



Fork head,  
20 mm

ZEISS no.: 600062-0000-721



Fork head,  
25 mm

ZEISS no.: 600062-0000-722



Fork head,  
30 mm

ZEISS no.: 600062-0000-723



Fork head,  
15 mm, with anti-twist device

ZEISS no.: 600062-0000-724



Fork head,  
20 mm, with anti-twist device

ZEISS no.: 600062-0000-725



Fork head,  
25 mm, with anti-twist device

ZEISS no.: 600062-0000-726



Fork head,  
30 mm, with anti-twist device

ZEISS no.: 600062-0000-727



Clamp console, base unit,  
slider (set: 2 units)

ZEISS no.: 600062-0000-737



Clamp console, base unit,  
foldable, 80 / 60 mm, left

ZEISS no.: 600062-0000-701



Clamp console,  
foldable, semi-finished part 1

ZEISS no.: 600062-0000-702



Clamp console,  
foldable, semi-finished part 2

ZEISS no.: 600062-0000-703



Clamp console 1,  
semi-finished part

ZEISS no.: 600062-0000-679



# Clamping and fastening elements

ZEISS CARFIT standard components

[back to Table of Contents](#)



Clamp holder,  
80 mm, left

ZEISS no.: 600062-0000-691



Clamp holder,  
80 mm, right

ZEISS no.: 600062-0000-692



Clamp holder,  
100 mm, left

ZEISS no.: 600062-0000-693



Clamp holder,  
100 mm, right

ZEISS no.: 600062-0000-694



Clamp holder,  
120 mm, left

ZEISS no.: 600062-0000-695



Clamp holder,  
120 mm, right

ZEISS no.: 600062-0000-696



Clamp holder,  
140 mm, left

ZEISS no.: 600062-0000-697



Clamp holder,  
140 mm, right

ZEISS no.: 600062-0000-698



Clamp holder,  
160 mm, left

ZEISS no.: 600062-0000-699



Clamp holder,  
160 mm, right

ZEISS no.: 600062-0000-700



Clamp arm extension,  
80 mm

ZEISS no.: 600062-0000-704



Clamp arm extension,  
100 mm

ZEISS no.: 600062-0000-705



Clamp arm extension,  
120 mm

ZEISS no.: 600062-0000-706



Clamp arm extension,  
140 mm

ZEISS no.: 600062-0000-707



Clamp arm extension,  
160 mm

ZEISS no.: 600062-0000-708



Clamp elevation,  
for clamp holder

ZEISS no.: 600062-0000-626

# Clamping and fastening elements

ZEISS CARFIT standard components

[back to Table of Contents](#)



Pressure spindle,  
spring-loaded,  
max. 22 N

ZEISS no.: 600062-0000-728



Spring-loaded pressure piece,  
50 mm, D10, M8,  
max. 10 N

ZEISS no.: 600062-0000-729



Clamping fork,  
10 mm

ZEISS no.: 600062-0000-764



NEW

Clamp console,  
200 mm,  
semi-finished part

ZEISS no.: 600062-0001-254



Clamp flange plate,  
50 mm

ZEISS no.: 600062-0000-410



NEW

Clamp flange plate,  
60 mm

ZEISS no.: 600062-0001-255



Clamp flange plate,  
60 mm, semi-finished part

ZEISS no.: 600062-0000-736



NEW

Clamp flange plate,  
80 mm

ZEISS no.: 600062-0001-256



Clamp flange plate,  
80 mm, semi-finished part

ZEISS no.: 600062-0000-683



Clamp flange plate,  
size for hole grid profile

ZEISS no.: 600062-0000-690



Clamp arm extension,  
clampable, 70 mm,  
for clamping fork 10 mm

ZEISS no.: 600062-0000-763



Clamp arm extension,  
clampable, 100 mm,  
for clamping fork 10 mm

ZEISS no.: 600062-0000-765



Clamp arm extension,  
90 mm,  
with anti-twist device

ZEISS no.: 600062-0000-685



Clamp arm extension,  
120 mm,  
with anti-twist device

ZEISS no.: 600062-0000-686



Clamp arm extension,  
150 mm,  
with anti-twist device

ZEISS no.: 600062-0000-687



Clamp arm extension,  
180 mm,  
with anti-twist device

ZEISS no.: 600062-0000-688

# Underfloor hook clamp

Application example

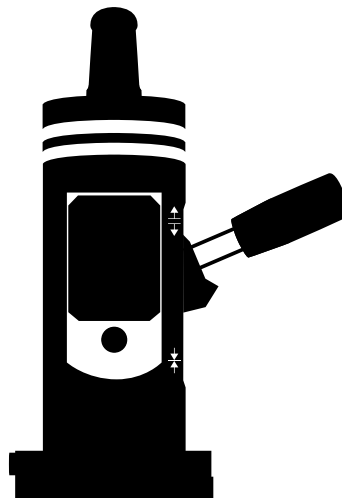
[back to Table of Contents](#)

Centring head for customized component fixture (clamping surface Ø: 18 - 35 mm)

Shim (1.50 - 4.20 mm)

Base body of the underfloor hook clamp

3D element (included)

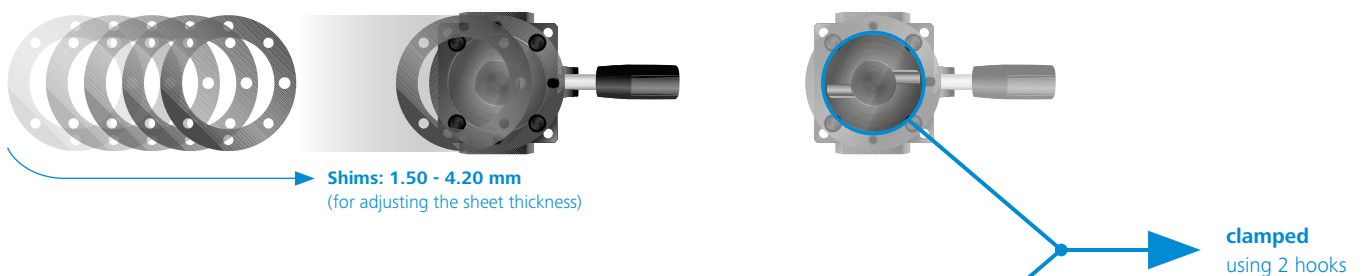


Underfloor hook clamp, configuration upon request

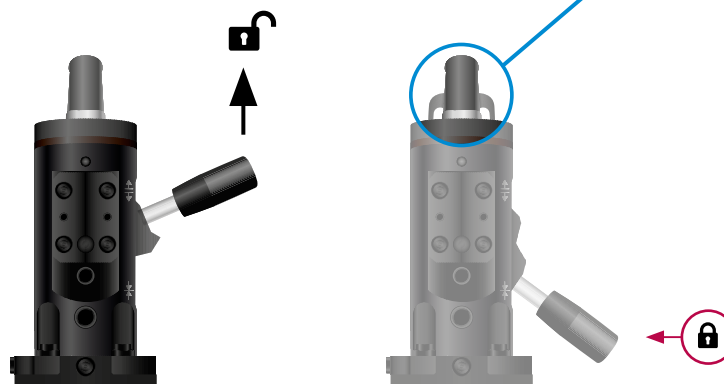
ZEISS no.: 600062-0000-529

## Operating the underfloor hook clamp when opened and closed

**1** Top view



**2** Side view





## 2 MOUNTING AND SUPPORT ELEMENTS







Bearing disk,  
D10 x 5 mm,  
hardened

ZEISS no.: 600062-0000-432



Bearing disk,  
D12 x 3 mm,  
hardened

ZEISS no.: 600062-0000-739



Bearing disk,  
D12 x 3 mm, hardened,  
semi-finished part, for contour  
support

ZEISS no.: 600062-0000-740



Bearing disk,  
D12 x 5 mm,  
hardened

ZEISS no.: 600062-0000-741



Bearing disk,  
D15 x 5 mm,  
hardened

ZEISS no.: 600062-0000-433



Support screw,  
M8 x 1 mm, D6,  
with SW6

ZEISS no.: 600062-0000-427



Support screw,  
M8 x 1 mm, D10,  
with SW6, short

ZEISS no.: 600062-0000-429



Support screw,  
M8 x 1 mm, D10,  
with SW6, long

ZEISS no.: 600062-0000-431



Support screw,  
M8 x 1 mm, D16,  
with SW13

ZEISS no.: 600062-0000-430



Support screw,  
M8 x 1 mm, D20,  
with SW13

ZEISS no.: 600062-0000-428



Support block,  
50 mm (for 3D element)

ZEISS no.: 600062-0000-762



Flange clamp,  
for master screw

ZEISS no.: 600062-0000-524

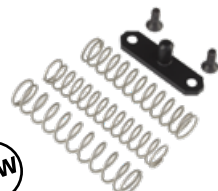
**NEW**



Support sphere center,  
60 mm (without 3D element),  
with ball bearing

ZEISS no.: 600062-0001-229

**NEW**



Spring assembly retrofit kit,  
for sliding unit

ZEISS no.: 600062-0200-119



Ball bearing,  
adjustable, long

ZEISS no.: 600062-0000-415



Ball bearing,  
adjustable, short

ZEISS no.: 600062-0000-416

# Mounting and support elements

ZEISS CARFIT standard components

[back to Table of Contents](#)



Ball bearing with magnet,  
M8 x 1 mm, D19

ZEISS no.: 600062-0000-519



Ball bearing with magnet,  
M8 x 1 mm, D27

ZEISS no.: 600062-0000-520



Ball bearing with magnet,  
M8 x 1 mm, D27, adjustable

ZEISS no.: 600062-0000-521



Ball bearing with magnet,  
M8 x 1 mm, D19, adjustable

ZEISS no.: 600062-0000-522



Ball bearing,  
M8 x 1 mm,  
D10, short

ZEISS no.: 600062-0000-547



Ball bearing,  
M8 x 1 mm,  
D10, long

ZEISS no.: 600062-0100-025



Master screw, base body,  
for contour support

ZEISS no.: 600062-0210-367



Contour support, master screw,  
semi-finished part,  
30 x 30 x 50 mm

ZEISS no.: 600062-0210-395



Support screw, crowned,  
M8 x 1 mm, D10 x R9,  
with SW6

ZEISS no.: 600062-0001-048



Sheet thickness compensating ele-  
ment, assembly part, semi-finished,  
1-slider

ZEISS no.: 600062-0001-326



Sheet thickness compensating ele-  
ment, assembly part, semi-finished,  
2-slider

ZEISS no.: 600062-0001-327



Head plate,  
50 mm

ZEISS no.: 600062-0000-411



Head plate,  
60 mm

ZEISS no.: 600062-0000-238



Head plate,  
80 mm

ZEISS no.: 600062-0000-235



Clip mount,  
detachable

ZEISS no.: 600062-0000-638



Clip mount, center,  
detachable

ZEISS no.: 600062-0001-232

# 2 Mounting and support elements

ZEISS CARFIT standard components

[back to Table of Contents](#)



Master screw,  
flat, M4

ZEISS no.: 600062-0000-140



Master screw,  
flat, with magnet

ZEISS no.: 600062-0000-139



Master screw,  
crowned

ZEISS no.: 600062-0000-142



Master screw,  
crowned, with thread M4

ZEISS no.: 600062-0000-141



Master screw,  
crowned, with magnet

ZEISS no.: 600062-0000-143



Master screw,  
flat, with magnet,  
long

ZEISS no.: 600062-0000-302



Master screw,  
flat, with thread M4,  
long

ZEISS no.: 600062-0000-303



Master screw,  
crowned, with thread M4,  
long

ZEISS no.: 600062-0000-304



Master screw,  
crowned, without thread,  
long

ZEISS no.: 600062-0000-305



Master screw,  
crowned, with magnet,  
long

ZEISS no.: 600062-0000-306

**NEW**



Master screw,  
flat, with magnet,  
20 N

ZEISS no.: 600062-0001-056

**NEW**



Master screw,  
crowned, with magnet,  
20 N

ZEISS no.: 600062-0001-057

**NEW**



Master screw, narrow,  
flat, with magnet,  
long

ZEISS no.: 600062-0001-250

**NEW**



Master screw, narrow,  
crowned, with magnet,  
long

ZEISS no.: 600062-0001-251

**NEW**



Master screw, narrow,  
flat, with magnet,  
short

ZEISS no.: 600062-0001-252

**NEW**



Master screw, narrow,  
crowned, with magnet,  
short

ZEISS no.: 600062-0001-253



# Mounting and support elements

ZEISS CARFIT standard components

[back to Table of Contents](#)



Sliding unit, left,  
60 mm, with setting pin  
(without 3D element)

ZEISS no.: 600062-0000-803



Sliding unit, center,  
60 mm, with setting pin  
(without 3D element)

ZEISS no.: 600062-0000-802



Sliding unit, right,  
60 mm, with setting pin  
(without 3D element)

ZEISS no.: 600062-0000-804



Sliding unit, corner, left,  
60 mm, with setting pin  
(without 3D element)

ZEISS no.: 600062-0000-805



Sliding unit, corner, right,  
60 mm, with setting pin  
(without 3D element)

ZEISS no.: 600062-0000-841



Sliding unit, left,  
60 mm, short, with setting pin  
(without 3D element)

ZEISS no.: 600062-0000-806



Sliding unit, center,  
60 mm, short, with setting pin  
(without 3D element)

ZEISS no.: 600062-0000-808



Sliding unit, right,  
60 mm, short, with setting pin,  
(without 3D element)

ZEISS no.: 600062-0000-807



Sliding unit, left,  
60 mm, with setting pin  
(with 3D element)

ZEISS no.: 600062-0000-149



Sliding unit, center,  
60 mm, with setting pin  
(with 3D element)

ZEISS no.: 600062-0000-148



Sliding unit, left,  
60 mm, short, with setting pin  
(with 3D element)

ZEISS no.: 600062-0000-628



Sliding unit, right,  
60 mm, with setting pin  
(with 3D element)

ZEISS no.: 600062-0000-150



Sliding unit, center,  
60 mm, short, with setting pin  
(with 3D element)

ZEISS no.: 600062-0000-627



Sliding unit, right,  
60 mm, short, with setting pin  
(with 3D element)

ZEISS no.: 600062-0000-629



Sliding unit, corner, left,  
60 mm, with setting pin  
(with 3D element)

ZEISS no.: 600062-0000-630



Sliding unit, corner, right,  
60 mm, with setting pin  
(with 3D element)

ZEISS no.: 600062-0000-631

# 2 Mounting and support elements

ZEISS CARFIT standard components

[back to Table of Contents](#)



Sliding unit, center,  
60 mm, short  
(without 3D element), spring-loaded

ZEISS no.: 600062-0001-230



Sliding unit, center,  
80 mm  
(with bolt platform)

ZEISS no.: 600062-0000-533



Sliding unit, center,  
80 mm  
(with 3D element)

ZEISS no.: 600062-0000-534



Sliding unit, 80 mm,  
for ball bearing M8 x 1 mm  
(without 3D element)

ZEISS no.: 600062-0000-545



Contour mount, base body,  
left, 60 mm, 10 LL  
(with 3D element)

ZEISS no.: 600062-0000-643



Contour mount, assembly part,  
left, 60 mm, 10 LL  
(with 3D element)

ZEISS no.: 600062-0000-642



Contour mount, base body,  
right, 60 mm, 10 LL  
(with 3D element)

ZEISS no.: 600062-0000-648



Contour mount, assembly part,  
right, 60 mm, 10 LL  
(with 3D element)

ZEISS no.: 600062-0000-647



Contour mount, block,  
left, 60 mm

ZEISS no.: 600062-0000-644



Contour mount, block,  
right, 60 mm

ZEISS no.: 600062-0000-649



Contour mount, block,  
80 mm

ZEISS no.: 600062-0000-641



Contour mount, base body,  
left, 60 mm, 10 LL,  
external (with 3D element)

ZEISS no.: 600062-0000-831



Contour mount, assembly part,  
left, 60 mm, 10 LL,  
external (with 3D element)

ZEISS no.: 600062-0000-832



Contour mount, assembly part,  
left corner, 60 mm, 10 LL,  
external (with 3D element)

ZEISS no.: 600062-0000-836



Contour mount, base body,  
right corner, 60 mm, 10 LL,  
external (with 3D element)

ZEISS no.: 600062-0000-837



Contour mount, assembly part,  
right corner, 60 mm, 10 LL,  
external (with 3D element)

ZEISS no.: 600062-0000-838

# Mounting and support elements

ZEISS CARFIT standard components

[back to Table of Contents](#)



Contour mount, base body, left corner, 60 mm, 10 LL, external (with 3D element)

ZEISS no.: 600062-0000-835



Contour mount, base body, right, 60 mm, 10 LL, external (with 3D element)

ZEISS no.: 600062-0000-833



Contour mount, assembly part, right, 60 mm, 10 LL, external (with 3D element)

ZEISS no.: 600062-0000-834



Contour mount, base body, left, 80 mm, 10 LL

ZEISS no.: 600062-0000-640



Contour mount, assembly part, left, 80 mm, 10 LL (with 3D element)

ZEISS no.: 600062-0000-639



Contour mount, base body, right, 80 mm, 10 LL

ZEISS no.: 600062-0000-646



Contour mount, assembly part, right, 80 mm, 10 LL (with 3D element)

ZEISS no.: 600062-0000-645



Support block, single block tower, 60 mm

ZEISS no.: 600062-0000-822



Support block, 60 mm (for 3D element)

ZEISS no.: 600062-0000-823



Support block, single block tower, 80 mm

ZEISS no.: 600062-0001-198



Support block, 80 mm, (for 3D element)

ZEISS no.: 600062-0001-199



Support block, left, 60 mm, stainless steel

ZEISS no.: 600062-0000-621



Support block, center, 60 mm, stainless steel

ZEISS no.: 600062-0000-620



Support block, right, 60 mm, stainless steel

ZEISS no.: 600062-0000-622



Support block, left, 80 mm, stainless steel

ZEISS no.: 600062-0000-539



Support block, center, 80 mm, stainless steel

ZEISS no.: 600062-0000-538



Support block, right, 80 mm, stainless steel

ZEISS no.: 600062-0000-540









3D adjustment element,  
assembly part, 50 mm

ZEISS no.: 600062-0000-761



3D adjustment element,  
base plate, 50 mm

ZEISS no.: 600062-0000-760



3D adjustment element,  
base plate, 60 mm

ZEISS no.: 600062-0000-518



3D base plate,  
base plate, 80 mm

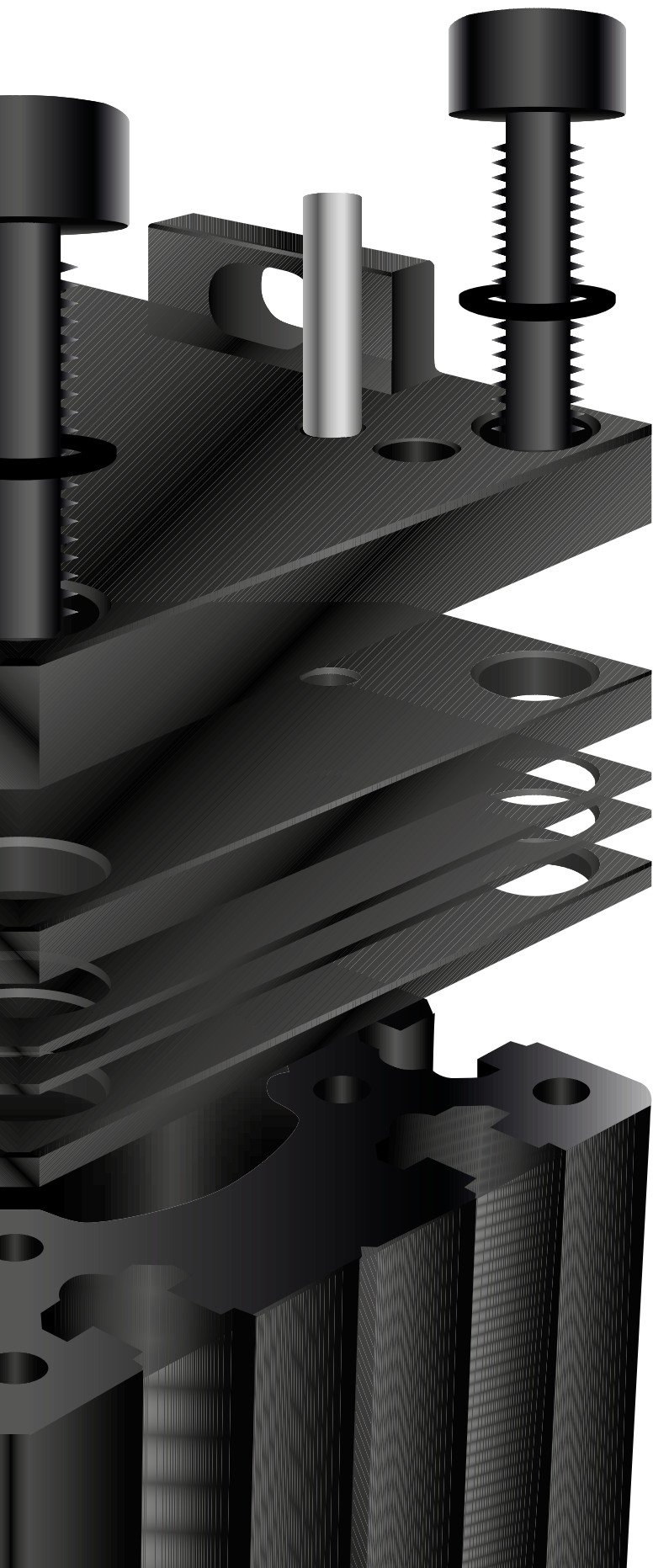
ZEISS no.: 600062-0000-145



# Adjustment elements

ZEISS CARFIT standard components

[back to Table of Contents](#)



NEW

3D adjustment element,  
assembly part, 60 mm,  
cavity shim

ZEISS no.: 600062-0000-247



NEW

3D adjustment element,  
assembly part, 80 mm,  
cavity shim

ZEISS no.: 600062-0000-248



NEW

3D adjustment element,  
assembly part, 60 mm,  
ridge shim

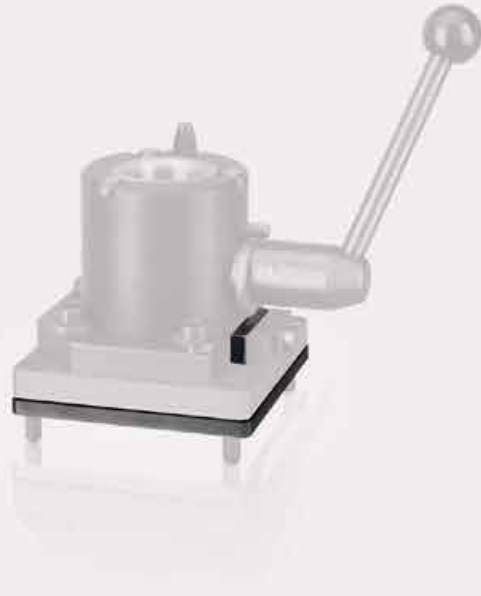
ZEISS no.: 600062-0210-666



NEW

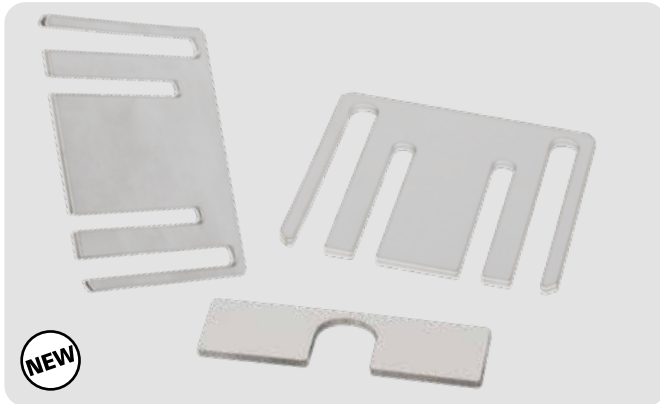
3D adjustment element,  
assembly part, 80 mm,  
ridge shim

ZEISS no.: 600062-0210-667

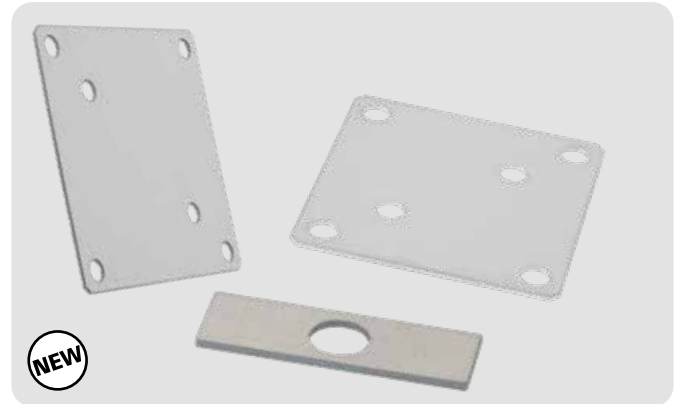




## Ridge shim



## Cavity shim

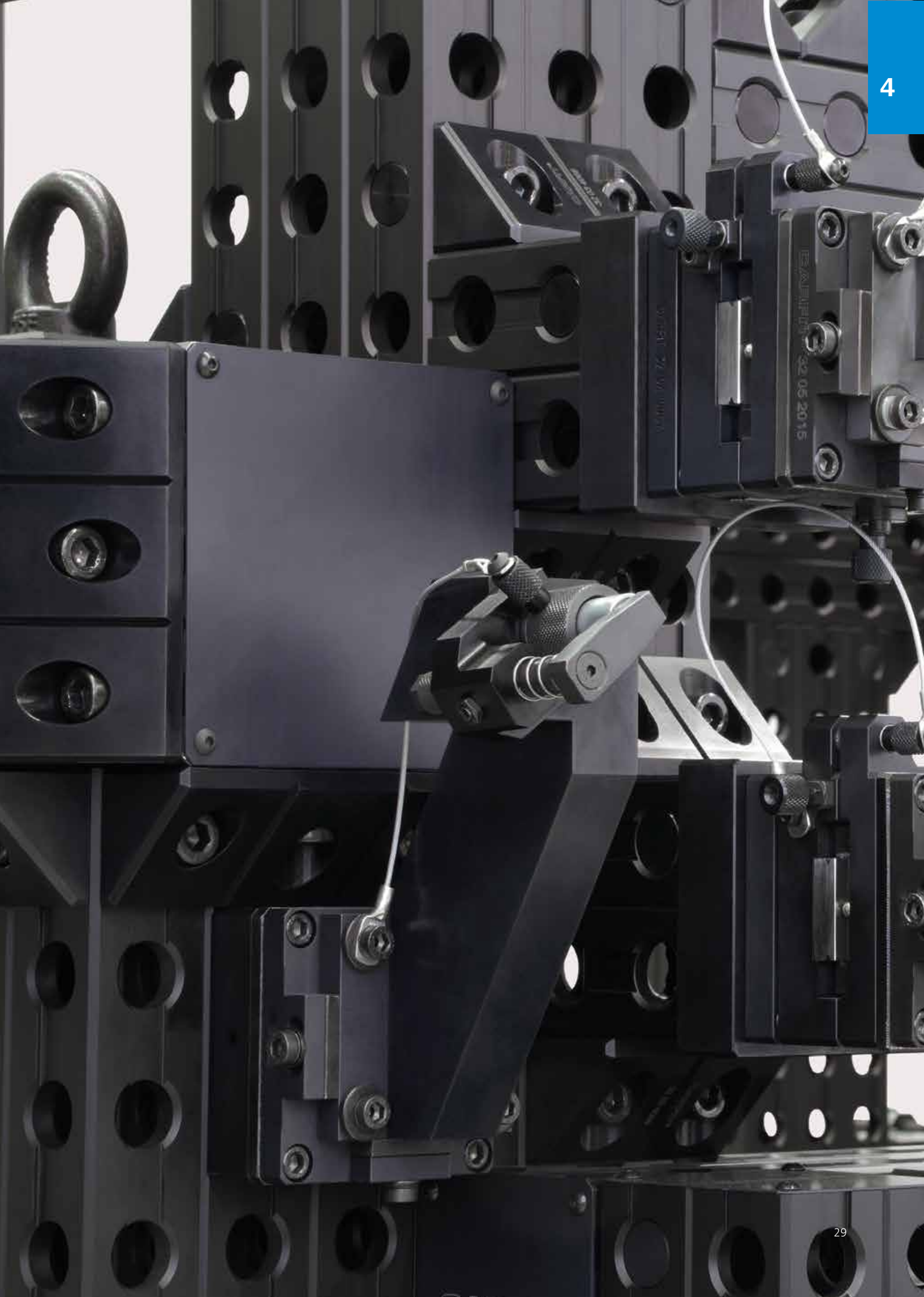


ZEISS no.	Description (length x width x height)
600062-0210-497	Package, open spacer plate, for sale of individual components 80 x 80 mm <sup>1</sup>
600062-0210-336	Open spacer plate 80 x 80 x 3.00 mm
600062-0210-337	Open spacer plate 80 x 80 x 2.00 mm
600062-0210-338	Open spacer plate 80 x 80 x 1.00 mm
600062-0210-339	Open spacer plate 80 x 80 x 0.50 mm
600062-0210-340	Open spacer plate 80 x 80 x 0.20 mm
600062-0210-341	Open spacer plate 80 x 80 x 0.25 mm
600062-0210-342	Open spacer plate 80 x 80 x 0.10 mm
600062-0210-489	Open spacer plate 80 x 80 x 0.05 mm
600062-0210-498	Package, open spacer plate, for sale of individual components 60 x 60 mm <sup>1</sup>
600062-0210-344	Open spacer plate 60 x 60 x 3.00 mm
600062-0210-345	Open spacer plate 60 x 60 x 2.00 mm
600062-0210-346	Open spacer plate 60 x 60 x 1.00 mm
600062-0210-347	Open spacer plate 60 x 60 x 0.50 mm
600062-0210-348	Open spacer plate 60 x 60 x 0.20 mm
600062-0210-349	Open spacer plate 60 x 60 x 0.25 mm
600062-0210-350	Open spacer plate 60 x 60 x 0.10 mm
600062-0210-490	Open spacer plate 60 x 60 x 0.05 mm
600062-0210-499	Package, open spacer plate, for sale of individual components 10 x 30 mm <sup>1</sup>
600062-0210-352	Open spacer plate 10 x 30 x 3.00 mm
600062-0210-353	Open spacer plate 10 x 30 x 2.00 mm
600062-0210-354	Open spacer plate 10 x 30 x 1.00 mm
600062-0210-355	Open spacer plate 10 x 30 x 0.50 mm
600062-0210-356	Open spacer plate 10 x 30 x 0.20 mm
600062-0210-357	Open spacer plate 10 x 30 x 0.25 mm
600062-0210-358	Open spacer plate 10 x 30 x 0.10 mm
600062-0210-491	Open spacer plate 10 x 30 x 0.05 mm

ZEISS no.	Description (length x width x height)
600062-0210-540	Package, closed spacer plate, for sale of individual components 80 x 80 mm <sup>1</sup>
600062-0210-504	Spacer plate 80 x 80 x 3.00 mm
600062-0210-505	Spacer plate 80 x 80 x 2.00 mm
600062-0210-506	Spacer plate 80 x 80 x 1.00 mm
600062-0210-507	Spacer plate 80 x 80 x 0.50 mm
600062-0210-508	Spacer plate 80 x 80 x 0.20 mm
600062-0210-509	Spacer plate 80 x 80 x 0.25 mm
600062-0210-510	Spacer plate 80 x 80 x 0.10 mm
600062-0210-536	Spacer plate 80 x 80 x 0.05 mm
600062-0210-541	Package, closed spacer plate, for sale of individual components 60 x 60 mm <sup>1</sup>
600062-0210-511	Spacer plate 60 x 60 x 3.00 mm
600062-0210-512	Spacer plate 60 x 60 x 2.00 mm
600062-0210-513	Spacer plate 60 x 60 x 1.00 mm
600062-0210-514	Spacer plate 60 x 60 x 0.50 mm
600062-0210-515	Spacer plate 60 x 60 x 0.20 mm
600062-0210-516	Spacer plate 60 x 60 x 0.25 mm
600062-0210-517	Spacer plate 60 x 60 x 0.10 mm
600062-0210-537	Spacer plate 60 x 60 x 0.05 mm
600062-0210-542	Package, closed spacer plate, for sale of individual components 10 x 30 mm <sup>1</sup>
600062-0210-518	Spacer plate 10 x 30 x 3.00 mm
600062-0210-519	Spacer plate 10 x 30 x 2.00 mm
600062-0210-520	Spacer plate 10 x 30 x 1.00 mm
600062-0210-521	Spacer plate 10 x 30 x 0.50 mm
600062-0210-522	Spacer plate 10 x 30 x 0.20 mm
600062-0210-523	Spacer plate 10 x 30 x 0.25 mm
600062-0210-524	Spacer plate 10 x 30 x 0.10 mm
600062-0210-538	Spacer plate 10 x 30 x 0.05 mm

<sup>1)</sup> Each package of spacer plates consists of: 1 x 3 mm, 1 x 2 mm, 1 x 1 mm, 1 x 0.5 mm, 1 x 0.25 mm, 2 x 0.2 mm, 1 x 0.1 mm, 1 x 0.05 mm





# SLIDING, ARTICULATING AND CHANGE ELEMENTS

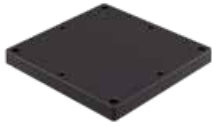




# Sliding, articulating and change elements

ZEISS CARFIT standard components

[back to Table of Contents](#)



Adapter plate,  
slide, 120 mm

ZEISS no.: 600062-0000-425



Dial gauge holder with pin,  
for cross slide

ZEISS no.: 600062-0000-424



Linear slide,  
60 mm, spring assembly

ZEISS no.: 600062-0000-419



Cross slide (2x linear slide),  
60 mm, spring assembly

ZEISS no.: 600062-0000-419 (2x)



Linear slide,  
60 mm, adjustable

ZEISS no.: 600062-0000-420



Cross slide (2x linear slide),  
60 mm, adjustable

ZEISS no.: 600062-0000-420 (2x)



Linear slide,  
80 mm, spring assembly

ZEISS no.: 600062-0000-421



Cross slide (2x linear slide),  
80 mm, spring assembly

ZEISS no.: 600062-0000-421 (2x)



Linear slide,  
80 mm, adjustable

ZEISS no.: 600062-0000-422



Cross slide (2x linear slide),  
80 mm, adjustable

ZEISS no.: 600062-0000-422 (2x)



Linear slide,  
120 mm, spring assembly

ZEISS no.: 600062-0000-423



Cross slide (2x linear slide),  
120 mm, spring assembly

ZEISS no.: 600062-0000-423 (2x)



Coupling element,  
main mount

ZEISS no.: 600062-0000-531



Coupling element,  
side mount

ZEISS no.: 600062-0000-532



Coupling element,  
base body

ZEISS no.: 600062-0000-535



Special pin,  
for cross slide

ZEISS no.: 600062-0001-247

# Sliding, articulating and change elements

ZEISS CARFIT standard components

[back to Table of Contents](#)



Quick change element V1,  
upper part, 60 mm, KM6,  
round bolt

ZEISS no.: 600062-0000-130



Quick change element V1,  
upper part, 60 mm, KM6,  
strut bolt

ZEISS no.: 600062-0000-131



Quick change element V1,  
upper part, 80 mm, KM6,  
round bolt

ZEISS no.: 600062-0000-126



Quick change element V1,  
upper part, 80 mm, KM6,  
strut bolt

ZEISS no.: 600062-0000-127



Quick change element V1,  
upper part, 60 mm, M6,  
round bolt

ZEISS no.: 600062-0000-132



Quick change element V1,  
upper part, 60 mm, M6,  
strut bolt

ZEISS no.: 600062-0000-133



Quick change element V1,  
upper part, 80 mm, M6,  
round bolt

ZEISS no.: 600062-0000-128



Quick change element V1,  
upper part, 80 mm, M6,  
strut bolt

ZEISS no.: 600062-0000-129



Quick change element V1,  
lower part, 60 mm

ZEISS no.: 600062-0000-619



Quick change element V1,  
lower part, 80 mm

ZEISS no.: 600062-0000-146



Quick change element V1,  
lower part, 60 / 80 mm,  
on 3D adjustment element 80 mm

ZEISS no.: 600062-0000-618



DEA-FIVE adapter,  
60 mm

ZEISS no.: 600062-0000-335



Quick change element V3,  
upper part, 60 mm

ZEISS no.: 600062-0205-013



Quick change element V3,  
lower part, 60 mm,  
for extruded profile

ZEISS no.: 600062-0205-015



Quick change element V3,  
upper part, 80 mm,

ZEISS no.: 600062-0205-016



Quick change element V3,  
lower part, 80 mm,  
for hole grid profile

ZEISS no.: 600062-0205-017





Quick change element V3,  
lower part, 80 mm,  
for extruded profile

ZEISS no.: 600062-0205-018



Articulating element,  
60 mm

ZEISS no.: 600062-0000-157



Articulating element,  
80 mm

ZEISS no.: 600062-0000-156



Articulating element,  
120 mm

ZEISS no.: 600062-0210-390



Hinge,  
quick change element V3,  
for 60 / 80 mm

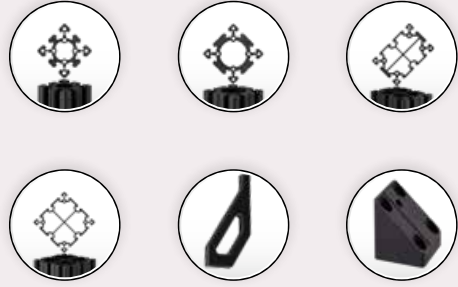
ZEISS no.: 600062-0205-014



Locking device,  
quick change element V3,  
for 60 / 80 mm

ZEISS no.: 600062-0205-019







# Extruded profiles<sup>1</sup>

ZEISS CARFIT standard components

[back to Table of Contents](#)



Extruded profile,  
40 x 40 mm,  
sold by meter

ZEISS no.: 600062-0000-251



Extruded profile,  
60 x 60 mm,  
sold by meter

ZEISS no.: 600062-0000-250



Extruded profile,  
80 x 80 mm,  
sold by meter

ZEISS no.: 600062-0000-249



Extruded profile,  
80 x 120 mm,  
sold by meter

ZEISS no.: 600062-0000-365



Extruded profile,  
120 x 120 mm,  
sold by meter

ZEISS no.: 600062-0000-366

NEW



Column support,  
universal,  
height 255 mm

ZEISS no.: 600062-0000-964

NEW



Column support,  
universal,  
height 150 mm

ZEISS no.: 600062-0000-344



Column support,  
profile 30°

ZEISS no.: 600062-0000-347



Column support,  
profile 45°

ZEISS no.: 600062-0000-346



Column support,  
profile 60°

ZEISS no.: 600062-0000-348

Fixture with extruded profiles without a component

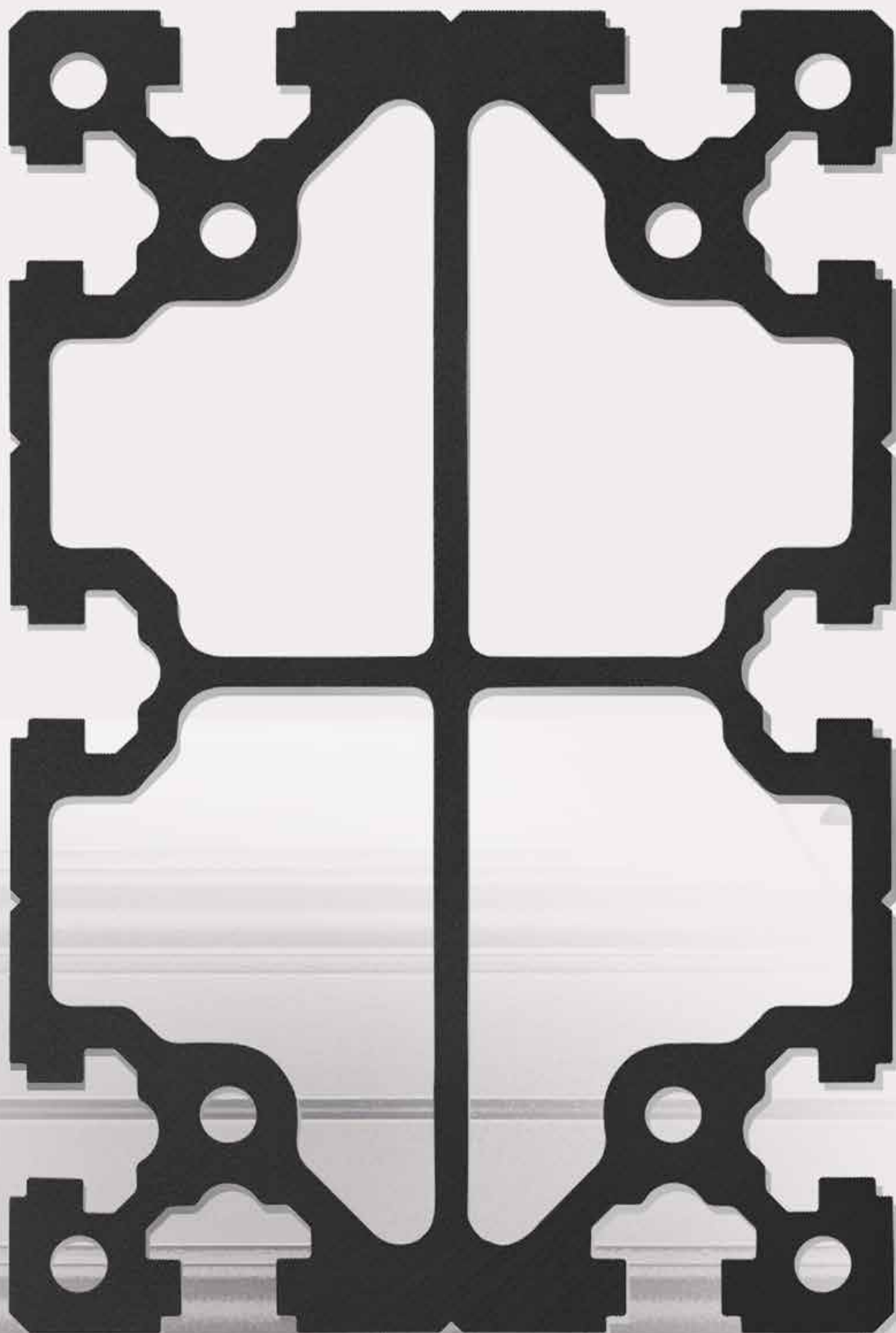


Fixture with extruded profiles and a component











T-nut

ZEISS no.: 600062-0000-161



Diamond nut

ZEISS no.: 600062-0000-162

Pin bushing,  
D9, with O-ring

ZEISS no.: 600062-0000-137

Pin bushing,  
D12.5, with O-ring

ZEISS no.: 600062-0000-413

Adapter plate,  
40 mm

ZEISS no.: 600062-0000-671

Adapter plate,  
40 mm, cross

ZEISS no.: 600062-0000-672

Adapter plate,  
40 / 60 mm

ZEISS no.: 600062-0000-673

Adapter plate,  
40 / 60 mm, cross

ZEISS no.: 600062-0000-674

Adapter plate,  
60 mm, KM6

ZEISS no.: 600062-0000-668

Adapter plate,  
60 mm, M6

ZEISS no.: 600062-0000-669

Adapter plate,  
60 mm, cross

ZEISS no.: 600062-0000-670

Adapter plate,  
80 mm, M6

ZEISS no.: 600062-0000-660

Adapter plate,  
60 / 80 mm, M6

ZEISS no.: 600062-0000-662

Adapter plate,  
60 / 80 mm, cross

ZEISS no.: 600062-0000-664

Adapter plate,  
80 mm, KM6, dual

ZEISS no.: 600062-0000-663

Adapter plate,  
80 mm, dual cross

ZEISS no.: 600062-0000-665

# Connecting technology: extruded profiles

ZEISS CARFIT standard components

[back to Table of Contents](#)



Adapter plate,  
80 mm, KM6

ZEISS no.: 600062-0000-675



Adapter plate,  
80 mm, cross

ZEISS no.: 600062-0000-676



Adapter plate,  
80 / 60 mm, KM6

ZEISS no.: 600062-0000-677



Adapter plate,  
80 / 120 mm, KM6

ZEISS no.: 600062-0000-666



Adapter plate,  
80 / 120 mm, face

ZEISS no.: 600062-0000-667



Adaptation angle,  
60 mm, M6

ZEISS no.: 600062-0000-658



Adaptation angle,  
80 mm, M6

ZEISS no.: 600062-0000-659



NEW

Adaptation angle,  
60 mm, KM6

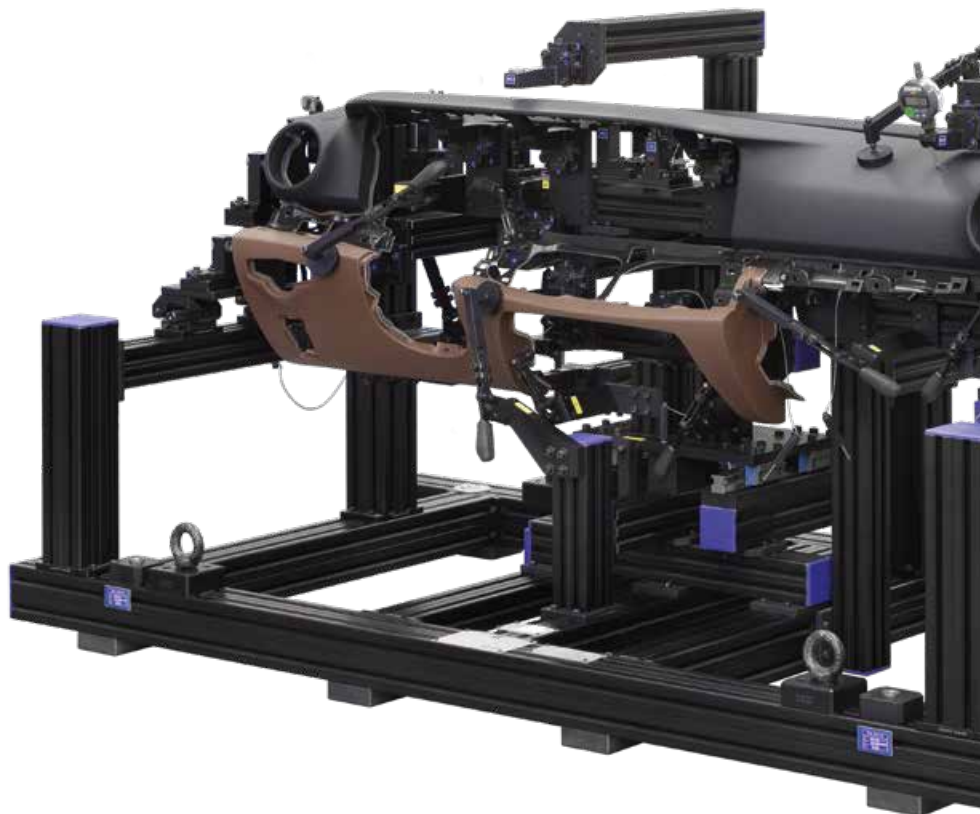
ZEISS no.: 600062-0001-171

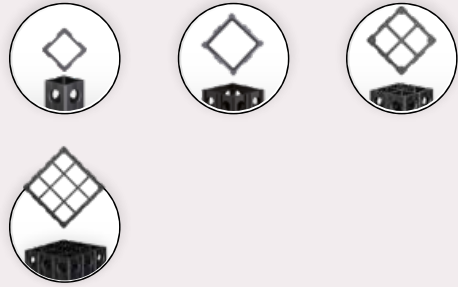


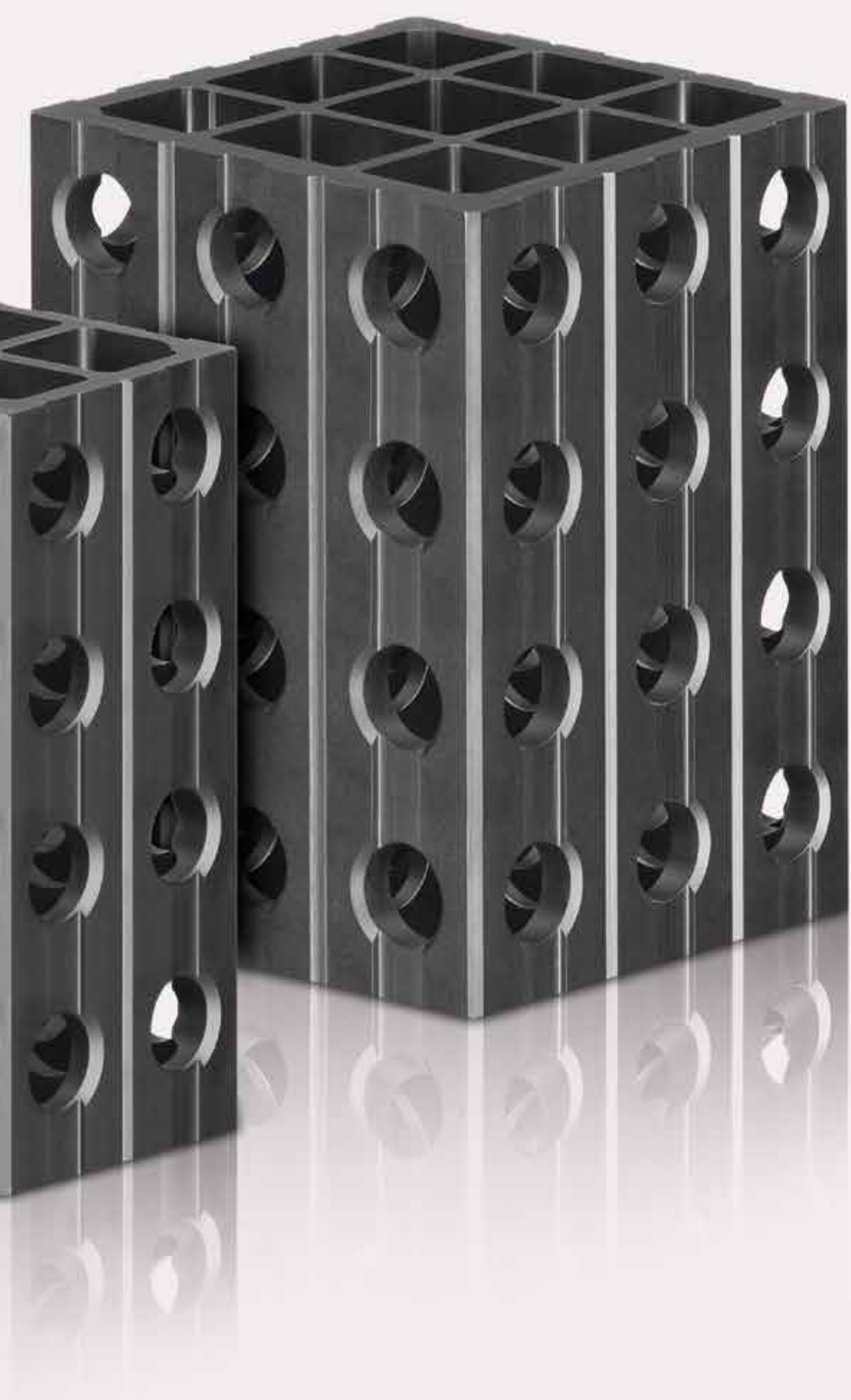
NEW

Adaptation angle,  
80 mm, KM6

ZEISS no.: 600062-0001-172











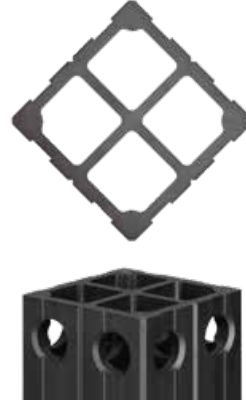
Hole grid profile,  
40 x 40 mm,  
sold by meter, Grid: 40 mm

ZEISS no.: 600062-0000-369



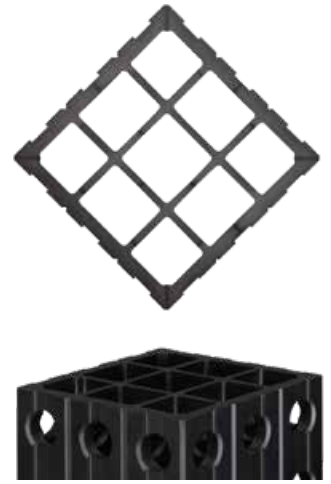
Hole grid profile,  
50 x 50 mm,  
sold by meter, Grid: 25 mm

ZEISS no.: 600062-0000-370



Hole grid profile,  
80 x 80 mm,  
sold by meter, Grid: 40 mm

ZEISS no.: 600062-0000-367

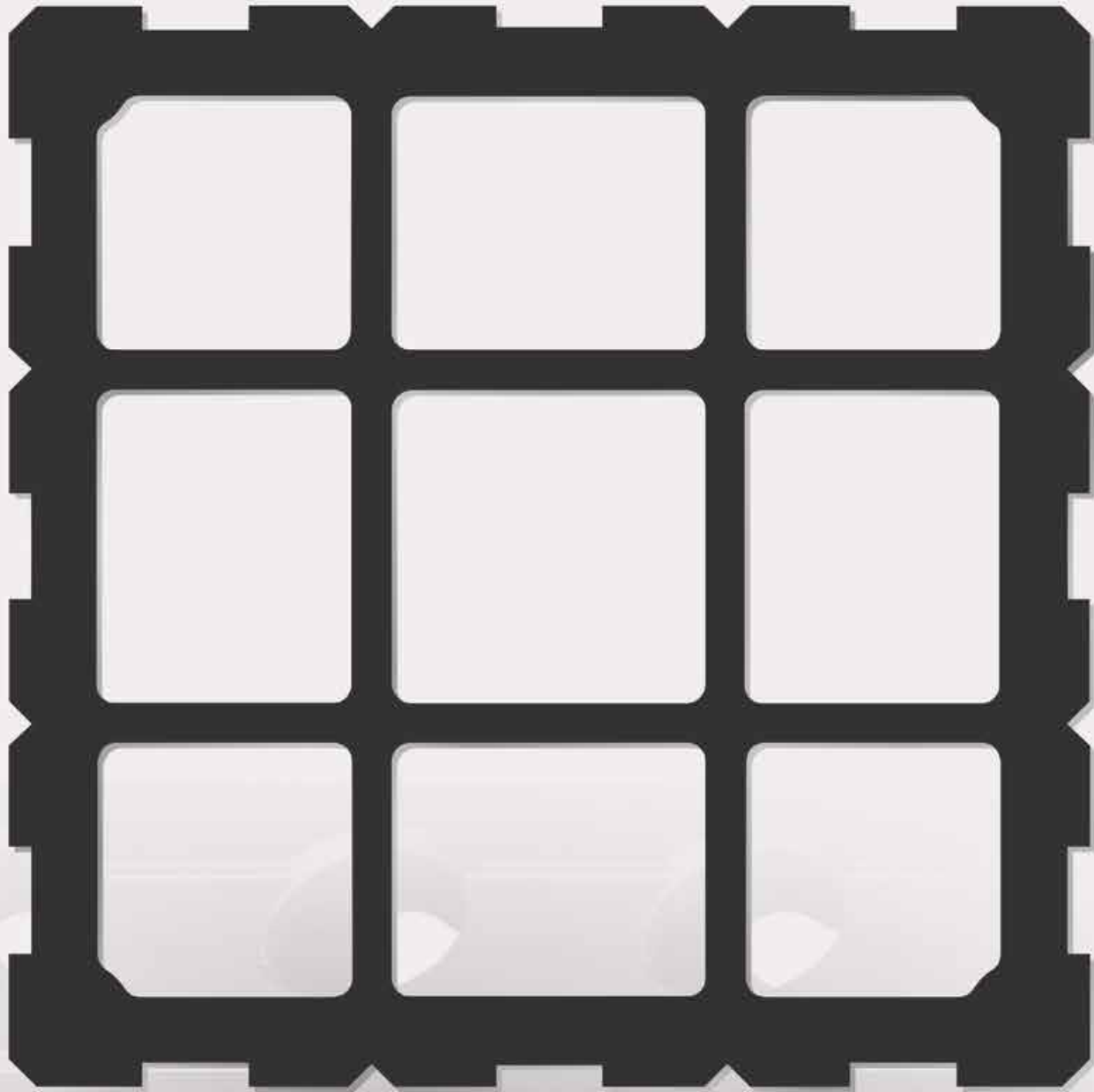


Hole grid profile,  
120 x 120 mm,  
sold by meter, Grid: 40 mm

ZEISS no.: 600062-0000-368









Hole adapter plate,  
long side 50 mm

ZEISS no.: 600062-0000-405



Hole adapter plate,  
long side 50 mm,  
semi-finished part

ZEISS no.: 600062-0000-795



Hole adapter plate,  
40 mm, M6 face

ZEISS no.: 600062-0000-398



Hole adapter plate,  
40 mm, BB40, M6 face

ZEISS no.: 600062-0000-380



Hole adapter plate,  
80 mm, BB80, KM6

ZEISS no.: 600062-0000-372



Hole adapter plate,  
80 mm, BB80, M6

ZEISS no.: 600062-0000-373



Hole adapter plate,  
80 mm, BB60, M6

ZEISS no.: 600062-0000-374



Hole adapter plate,  
80 mm, BB60, M6 face

ZEISS no.: 600062-0000-381



Hole adapter plate,  
SWE 80 mm, BB80, KM6

ZEISS no.: 600062-0000-756  
Price: €86.90



Hole adapter plate,  
SWE 80 mm, BB80, M6

ZEISS no.: 600062-0000-757



Hole adapter plate,  
120 mm, BB80, M6 face

ZEISS no.: 600062-0000-376



Hole adapter plate,  
120 mm, BB120, M6

ZEISS no.: 600062-0000-375



Hole adapter plate,  
120 mm, BB120, M6 face

ZEISS no.: 600062-0000-379



Column support,  
universal,  
height 255 mm

ZEISS no.: 600062-0000-964



Adapter,  
for reference sphere

ZEISS no.: 600062-0001-244



Locking pins,  
D20, with O-ring

ZEISS no.: 600062-0000-391

# Connecting technology: Hole grid profiles

ZEISS CARFIT standard components

[back to Table of Contents](#)



Connecting bolt,  
40 mm, M6 center

ZEISS no.: 600062-0000-854



Connecting bolt,  
40 mm, M10 center

ZEISS no.: 600062-0000-396



Connecting bolt,  
40 mm, M10

ZEISS no.: 600062-0000-390



Connecting bolt,  
40 mm, KM10

ZEISS no.: 600062-0000-400



Connecting bolt,  
50 mm, M6

ZEISS no.: 600062-0000-407



Connecting bolt,  
50 mm, KM6

ZEISS no.: 600062-0000-408



Connecting bolt,  
80 mm, M6

ZEISS no.: 600062-0000-395



Connecting bolt,  
80 mm, M10

ZEISS no.: 600062-0000-384



Connecting bolt,  
80 mm, KM10

ZEISS no.: 600062-0000-385

**NEW**



Connecting bolt,  
90 mm, M10

ZEISS no.: 600062-0000-382



Connecting bolt,  
120 mm, M10

ZEISS no.: 600062-0000-386



Connecting bolt,  
120 mm, KM10

ZEISS no.: 600062-0000-387

**NEW**



Connecting bolt,  
45 mm, M10 face, M10

ZEISS no.: 600062-0000-401

**NEW**



Connecting bolt,  
45 mm, KM10 face, M10

ZEISS no.: 600062-0000-402

**NEW**



Connecting bolt,  
50 mm, M10 face, M10

ZEISS no.: 600062-0000-403

**NEW**



Connecting bolt,  
50 mm, KM10 face, M10

ZEISS no.: 600062-0000-404





Precision plate,  
40 mm

ZEISS no.: 600062-0000-399



Precision plate,  
50 mm

ZEISS no.: 600062-0000-406



Precision plate,  
80 mm

ZEISS no.: 600062-0000-753



Precision plate,  
120 mm

ZEISS no.: 600062-0000-754

**NEW**



Hole adapter plate,  
40 mm, semi-finished

ZEISS no.: 600062-0000-855

**NEW**



Hole adapter plate,  
40 mm

ZEISS no.: 600062-0000-856

**NEW**



Attachment plate,  
50 mm,  
with ring bolt M10

ZEISS no.: 600062-0000-790

**NEW**



Attachment plate,  
80 / 120 mm,  
with ring bolt M10

ZEISS no.: 600062-0000-414

**NEW**



Adapter plate,  
50 mm, face

ZEISS no.: 600062-0000-759



Fastening bracket,  
40 mm

ZEISS no.: 600062-0000-397

**NEW**



Fastening bracket,  
80 mm

ZEISS no.: 600062-0001-324









# Alignment angles, fastening bolts, base plates

ZEISS CARFIT standard components

[back to Table of Contents](#)



NEW

Fastening bolt, star knob, main mount, green, M8 / sleeve D12H7

ZEISS no.: 600062-0000-991



NEW

Fastening bolt, star knob, side mount, red, M8 / sleeve D11.98H7

ZEISS no.: 600062-0000-992



NEW

Fastening bolt, star knob, clamping bolt, black, M8 / sleeve D11.5

ZEISS no.: 600062-0000-993



Bushing D12, steel

ZEISS no.: 600062-0000-331



NEW

Fastening bolt, star knob, main mount, green, M10 / sleeve D12H7

ZEISS no.: 600062-0000-994



NEW

Fastening bolt, star knob, side mount, red, M10 / sleeve D11.98H7

ZEISS no.: 600062-0000-995



NEW

Fastening bolt, star knob, clamping bolt, black, M10 / sleeve D11.5

ZEISS no.: 600062-0000-996



Bushing D16, steel

ZEISS no.: 600062-0000-340



NEW

Fastening bolt, star knob, main mount, green, M12 / sleeve D16H7

ZEISS no.: 600062-0000-997



NEW

Fastening bolt, star knob, side mount, red, M12 / sleeve D15.98H7

ZEISS no.: 600062-0000-998



NEW

Fastening bolt, star knob, clamping bolt, black, M12 / sleeve D15.5

ZEISS no.: 600062-0000-999



Transport plate, 60 / 80 mm

ZEISS no.: 600062-0000-359



NEW

Alignment angle, 60 mm, 3D, without borehole

ZEISS no.: 600062-0210-692



NEW

Alignment angle, 80 mm, 3D, without borehole

ZEISS no.: 600062-0210-693



Alignment angle, 60 mm, without borehole

ZEISS no.: 600062-0000-842



Alignment angle, 80 mm, without borehole

ZEISS no.: 600062-0000-314

# Alignment angles, fastening bolts, base plates

ZEISS CARFIT standard components

[back to Table of Contents](#)



Base plate,  
50 mm,  
for hole grid profile

ZEISS no.: 600062-0000-767



Base plate,  
50 mm, with fastening hole,  
for hole grid profile

ZEISS no.: 600062-0000-766



Base plate, face,  
60 mm,  
for detachable caster wheel

ZEISS no.: 600062-0000-840



Base plate, face,  
80 mm,  
for detachable caster wheel

ZEISS no.: 600062-0000-322



Base plate, side,  
60 x 80 mm,  
for detachable caster wheel

ZEISS no.: 600062-0000-315



Base plate,  
80 x 120 mm, for detachable cas-  
ter wheel, for hole grid profile

ZEISS no.: 600062-0000-796



Base plate,  
80 mm,  
for hole grid profile

ZEISS no.: 600062-0000-794



Base plate,  
120 mm,  
for hole grid profile

ZEISS no.: 600062-0000-793



Base plate,  
90 x 90 x 12 mm,  
for profiles 60 x 60

ZEISS no.: 600062-0000-332



Base plate,  
110 x 110 x 12 mm,  
for profiles 80 x 80

ZEISS no.: 600062-0000-333



Base plate,  
250 x 250 mm, (D1 = 18 mm),  
semi-finished part

ZEISS no.: 600062-0000-355



Base plate,  
250 x 250 mm, (D1 = 22 mm),  
semi-finished part

ZEISS no.: 600062-0000-339



Base plate WG,  
285 x 285 x 20 mm,  
semi-finished part

ZEISS no.: 600062-0000-961



Base plate SP,  
285 x 285 x 20 mm,  
semi-finished part

ZEISS no.: 600062-0000-963



Base plate,  
285 x 185 x 20 mm,  
semi-finished part

ZEISS no.: 600062-0000-962



Base plate, 60,  
130 x 130 x 20 mm,  
D12, M8

ZEISS no.: 600062-0000-979





NEW

Base plate, 60,  
130 x 130 x 20 mm,  
D12, M10

ZEISS no.: 600062-0000-974



NEW

Base plate, 80,  
130 x 130 x 20 mm,  
D12, M10

ZEISS no.: 600062-0000-975



Detachable caster wheel  
(incl. base plate), 80 / 120 mm,  
for hole grid profiles

ZEISS no.: 600062-0000-797



Detachable caster wheel  
(incl. base plate), 60 / 80 mm,  
for extruded profiles

ZEISS no.: 600062-0000-316



NEW

Fastening bolt, knurled knob,  
main mount, green,  
M8 / sleeve D12H7

ZEISS no.: 600062-0001-002



NEW

Fastening bolt, knurled knob,  
side mount, red,  
M8 / sleeve D11.98H7

ZEISS no.: 600062-0001-003



NEW

Fastening bolt, knurled knob,  
clamping bolt, black,  
M8 / sleeve D11.5

ZEISS no.: 600062-0001-004



NEW

Fastening bolt, knurled knob,  
main mount, green,  
M10 / sleeve D12H7

ZEISS no.: 600062-0001-005



NEW

Fastening bolt, knurled knob,  
side mount, red,  
M10 / sleeve D11.98H7

ZEISS no.: 600062-0001-006



NEW

Fastening bolt, knurled knob,  
clamping bolt, black,  
M10 / sleeve D11.5

ZEISS no.: 600062-0001-007



NEW

Fastening bolt, knurled knob,  
main mount, green,  
M12 / sleeve D16H7

ZEISS no.: 600062-0001-008



NEW

Fastening bolt, knurled knob,  
side mount, red,  
M12 / sleeve D15.98H7

ZEISS no.: 600062-0001-009



NEW

Fastening bolt, knurled knob,  
clamping bolt, black,  
M12 / sleeve D15.5

ZEISS no.: 600062-0001-010

# Alignment angles, fastening bolts, base plates

ZEISS CARFIT standard components

[back to Table of Contents](#)



Clamping unit, for fixation unit (2 pc)

ZEISS no.: 600062-0000-352



Round bolt, for fixation unit

ZEISS no.: 600062-0000-353



Strut bolt, for fixation unit

ZEISS no.: 600062-0000-354



Collet chuck

ZEISS no.: 600062-0000-351



Screw joint set, clamping system

ZEISS no.: 600062-0000-350

## 11 HYDRAULIC LIFTING UNIT







Hydraulic lifting unit,  
lift height 29 mm,  
for extruded profiles

ZEISS no.: 600062-0000-323



Hydraulic lifting unit,  
lift height 100 mm,  
for extruded profiles

ZEISS no.: 600062-0000-857



Hydraulic lifting unit,  
lift height 29 mm,  
for hole grid profiles

ZEISS no.: 600062-0000-325



Hydraulic lifting unit,  
lift height 100 mm,  
for hole grid profiles

ZEISS-no.: 600062-0210-317



Mounting plate, on hydraulic pump,  
for extruded profile

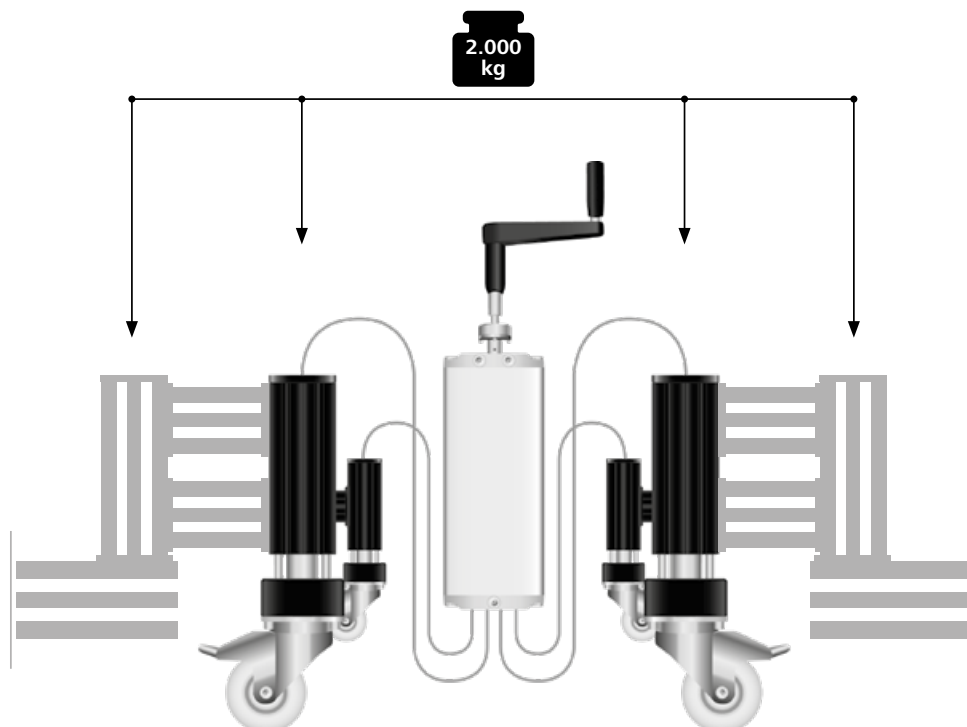
ZEISS no.: 600062-0000-324



Mounting plate, on hydraulic pump,  
for hole grid profile

ZEISS no.: 600062-0000-371

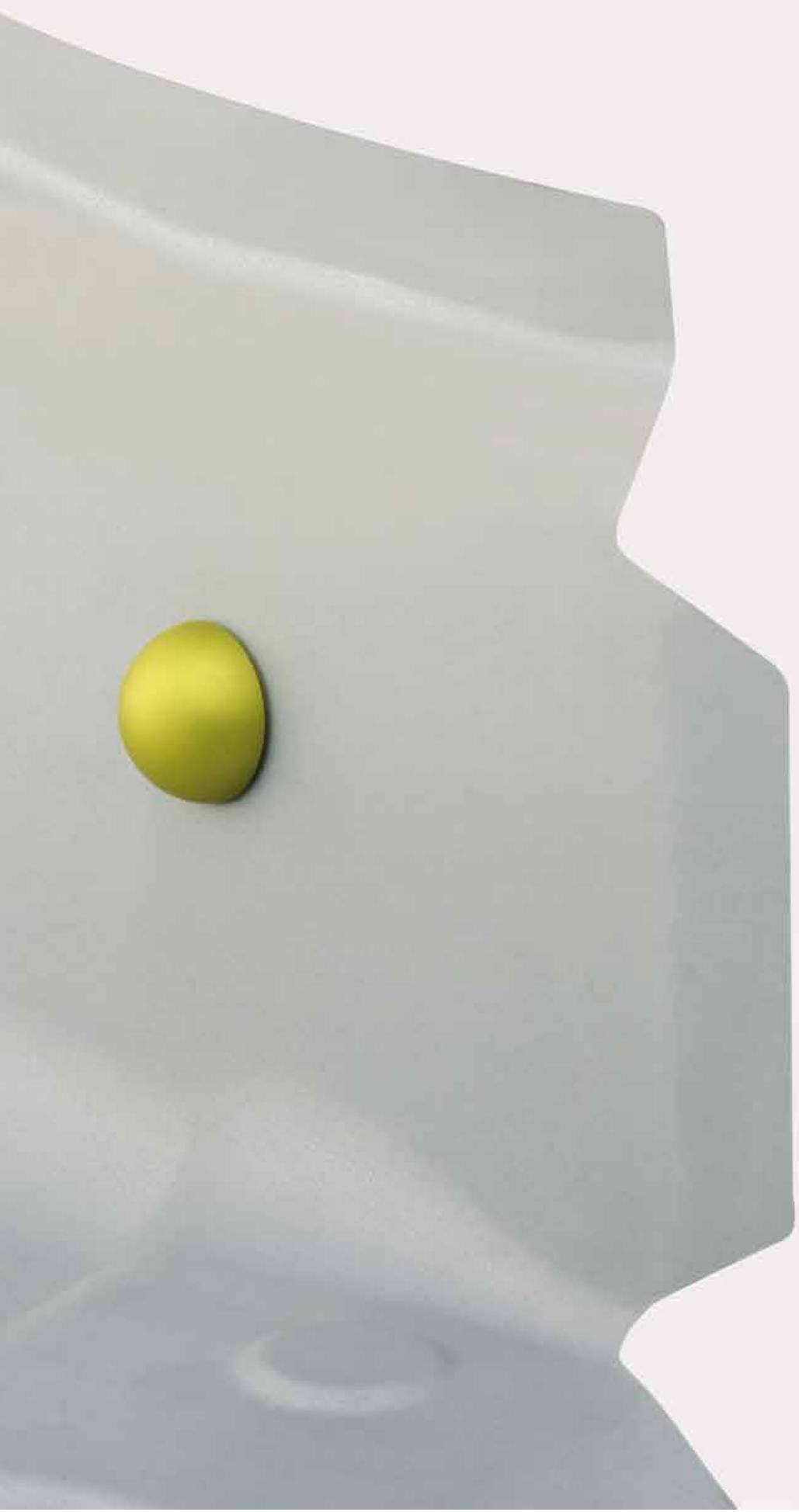
## Maximum load for the hydraulic lifting unit













End cap,  
60 x 60 mm (plastic)

ZEISS no.: 600062-0000-135



End cap,  
80 x 80 mm (plastic)

ZEISS no.: 600062-0000-134



End cap,  
40 x 40 mm

ZEISS no.: 600062-0000-758



End cap,  
80 x 120 mm

ZEISS no.: 600062-0000-661



Hole grid profile cap,  
50 mm

ZEISS no.: 600062-0000-412



Hole grid profile cap,  
80 mm

ZEISS no.: 600062-0000-791



Hole grid profile cap,  
120 mm

ZEISS no.: 600062-0000-792



Clamp holder,  
master screw

ZEISS no.: 600062-0001-058



Sphere-shaped spindle cover,  
D20

ZEISS no.: 600062-0000-549



Master gauge for dial gauge,  
variable

ZEISS no.: 600062-0001-194



Push-button reversal,  
Version A

ZEISS no.: 600062-0001-192



Push-button reversal,  
Version B

ZEISS no.: 600062-0001-192



Sphere-shaped spindle,  
D14 (mount D8)

ZEISS no.: 600062-0000-546



Sphere-shaped spindle,  
D20 (mount D8)

ZEISS no.: 600062-0000-548



Sphere-shaped spindle,  
D20 (mount D12.5 / M6)

ZEISS no.: 600062-0000-138



Sphere-shaped spindle,  
D30 (mount D12.5 / M6)

ZEISS no.: 600062-0000-426

# Accessories

ZEISS CARFIT standard components

[back to Table of Contents](#)



Retrofit kit: caster wheel

ZEISS no.: 600062-0000-317



Test mandrel, grip

ZEISS no.: 600062-0000-744



Inspection ruler, 0.5 mm

ZEISS no.: 600062-0000-745



Inspection ruler, 1 mm

ZEISS no.: 600062-0000-746



Clamping sleeve with magnet

ZEISS no.: 600062-0210-392



SPC folding element, centered

ZEISS no.: 600062-0000-742



Forklift shoe, 60 / 80 mm

ZEISS no.: 600062-0000-360



Forklift shoe, 60 / 80 mm, certified

ZEISS no.: 600062-0001-019



Gauge storage box

ZEISS no.: 600062-0001-296



Screw joint, dial gauge

ZEISS no.: 600062-0000-738



Locating bolt D5 for inspection adapter

ZEISS no.: 600062-0000-932



Locating bolt D6 for inspection adapter

ZEISS no.: 600062-0000-933



Locating bolt D8 for inspection adapter

ZEISS no.: 600062-0000-934



Locating bolt D10 for inspection adapter

ZEISS no.: 600062-0000-935



Locating bolt D12 for inspection adapter

ZEISS no.: 600062-0000-936



Locating bolt M4 for inspection adapter

ZEISS no.: 600062-0000-937

NEW



Locating bolt M5  
for inspection adapter

ZEISS no.: 600062-0000-938

NEW



Locating bolt M6  
for inspection adapter

ZEISS no.: 600062-0000-939

NEW



Locating bolt M8  
for inspection adapter

ZEISS no.: 600062-0000-940

NEW



Locating bolt M10  
for inspection adapter

ZEISS no.: 600062-0000-941

NEW



Plug nut M4,  
for boreholes,  
Ø5 to Ø6.9 mm

ZEISS no.: 600062-0000-942

NEW



Plug nut M5,  
for boreholes,  
Ø6.5 to Ø8.9 mm

ZEISS no.: 600062-0000-943

NEW



Plug nut M6,  
for boreholes,  
Ø8 to Ø10 mm

ZEISS no.: 600062-0000-944

NEW



inspection adapter D30,  
ZSB (including magnets)  
for locating bolt

ZEISS no.: 600062-0000-945

NEW



inspection adapter D25,  
ZSB (including magnets)  
for locating bolt

ZEISS no.: 600062-0000-946

NEW



inspection adapter D30,  
assembly part (including magnets)  
for optical reference marker

ZEISS no.: 600062-0000-948

NEW



inspection adapter D30, taper centring,  
for boreholes Ø1.5 to Ø6 mm,  
assembly part (incl. magnets)

ZEISS no.: 600062-0000-949

NEW



case,  
empty, for inspection adapter

ZEISS no.: 600062-0001-323



Storage cube,  
made of plastic, for quick change  
element V1

ZEISS no.: 600062-0000-318



# 13 TARGET SET







NEW



End piece,  
octagonal

ZEISS no.: 600062-0001-164

NEW



Base plate,  
for octagonal pieces

ZEISS no.: 600062-0001-157

NEW



Adapter plate,  
60 mm, for octagonal pieces

ZEISS no.: 600062-0001-158

NEW



Adapter plate,  
80 mm, for octagonal pieces

ZEISS no.: 600062-0210-387

NEW



Column, octagonal,  
100 mm

ZEISS no.: 600062-0001-146

NEW



Column, octagonal,  
150 mm

ZEISS no.: 600062-0001-147

NEW



Column, octagonal,  
200 mm

ZEISS no.: 600062-0001-148

NEW



Column, octagonal,  
300 mm

ZEISS-No.: 600062-0001-149

NEW



Column, octagonal,  
400 mm

ZEISS-No.: 600062-0001-150

NEW



Column, octagonal,  
500 mm

ZEISS-No.: 600062-0001-151

NEW



T-piece,  
octagonal

ZEISS no.: 600062-0001-160

NEW



Cross piece,  
octagonal

ZEISS no.: 600062-0001-161

NEW



Angle,  
octagonal

ZEISS no.: 600062-0001-159

NEW



Eccentric bolt,  
for octagonal pieces

ZEISS no.: 600062-0001-153

NEW



Locking pin,  
for octagonal pieces

ZEISS no.: 600062-0001-154

NEW



Centring bolt, wide,  
for octagonal pieces

ZEISS no.: 600062-0001-155

# Target set

ZEISS CARFIT standard components

[back to Table of Contents](#)



NEW

Swivel unit,  
octagonal

ZEISS no.: 600062-0001-163



NEW

Folding unit,  
octagonal

ZEISS no.: 600062-0001-167



NEW

Column,  
octagonal, 100 mm,  
for folding unit, unlocking

ZEISS no.: 600062-0001-168



NEW

Column,  
octagonal, 100 mm, on adapter  
plate for folding unit, unlocking

ZEISS-No.: 600062-0001-169



NEW

Swivel unit,  
octagonal, unlocking

ZEISS-No.: 600062-0001-170



NEW

Folding unit,  
for octagonal pieces

ZEISS-No.: 600062-0001-162



NEW

Column,  
octagonal, 100 mm,  
with compensation

ZEISS-No.: 600062-0001-152



NEW

Head element,  
octagonal, reference cross

ZEISS no.: 600062-0001-165



NEW

Reference mark holder,  
for octagonal pieces

ZEISS no.: 600062-0001-166



NEW

Centring bolt, tight,  
for octagonal pieces

ZEISS no.: 600062-0001-156



NEW

Universal hinge,  
for octagonal pieces

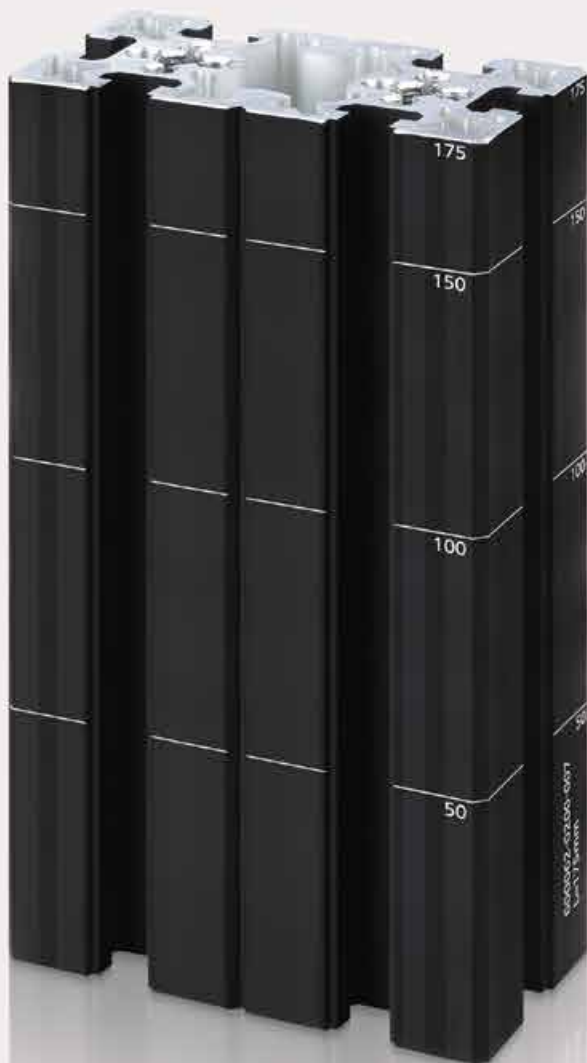
ZEISS no.: 600062-0210-495



NEW

Octagonal 8K,  
octagonal

ZEISS no.: 600062-0001-145







ZEISS CARFIT Smart connecting system for optical markers

[back to Table of Contents](#)


Extruded profile,  
50 x 50 mm,  
L = 25 - 2000 mm



Extruded profile,  
50 x 100 mm,  
L = 25 - 4000 mm



Extruded profile,  
100 x 100 mm,  
L = 25 - 4000 mm

Length (mm)	ZEISS no.:
25	600062-0210-496
50	600062-0210-472
75	600062-0210-473
100	600062-0210-425
125	600062-0210-426
150	600062-0210-427
175	600062-0210-428
200	600062-0210-429
225	600062-0210-430
250	600062-0210-431
275	600062-0210-432
300	600062-0210-433
325	600062-0210-434
350	600062-0210-435
375	600062-0210-436
400	600062-0210-437
425	600062-0210-438
450	600062-0210-439
475	600062-0210-440
500	600062-0210-441
550	600062-0210-442
600	600062-0210-443
650	600062-0210-444
700	600062-0210-445
750	600062-0210-446
800	600062-0210-447
850	600062-0210-448
900	600062-0210-449
950	600062-0210-450
1000	600062-0210-451
1050	600062-0210-452
1100	600062-0210-453
1150	600062-0210-454
1200	600062-0210-455
1250	600062-0210-456
1300	600062-0210-457
1350	600062-0210-458
1400	600062-0210-459
1450	600062-0210-460
1500	600062-0210-461
1550	600062-0210-462
1600	600062-0210-463
1650	600062-0210-464
1700	600062-0210-465
1750	600062-0210-466
1800	600062-0210-467
1850	600062-0210-468
1900	600062-0210-469
1950	600062-0210-470
2000	600062-0210-471

Length (mm)	ZEISS no.:
25	600062-0200-118
50	600062-0200-002
75	600062-0200-003
100	600062-0200-004
125	600062-0200-005
150	600062-0200-006
175	600062-0200-007
200	600062-0200-008
225	600062-0200-009
250	600062-0200-010
275	600062-0200-011
300	600062-0200-012
325	600062-0200-013
350	600062-0200-014
375	600062-0200-015
400	600062-0200-016
425	600062-0200-017
450	600062-0200-018
475	600062-0200-019
500	600062-0200-020
550	600062-0200-021
600	600062-0200-022
650	600062-0200-023
700	600062-0200-024
750	600062-0200-025
800	600062-0200-026
850	600062-0200-027
900	600062-0200-028
950	600062-0200-029
1000	600062-0200-030
1050	600062-0200-031
1100	600062-0200-032
1150	600062-0200-033
1200	600062-0200-034
1250	600062-0200-035
1300	600062-0200-036
1350	600062-0200-037
1400	600062-0200-038
1450	600062-0200-039
1500	600062-0200-040
1550	600062-0200-041
1600	600062-0200-042
1650	600062-0200-043
1700	600062-0200-044
1750	600062-0200-045
1800	600062-0200-046
1850	600062-0200-047
1900	600062-0200-048
1950	600062-0200-049
2000	600062-0200-050
2250	600062-0200-051
2500	600062-0200-052
2750	600062-0200-053
3000	600062-0200-054
3250	600062-0200-055
3500	600062-0200-056
3750	600062-0200-057
4000	600062-0200-058

Length (mm)	ZEISS no.:
25	600062-0200-060
50	600062-0200-061
75	600062-0200-062
100	600062-0200-063
125	600062-0200-064
150	600062-0200-065
175	600062-0200-066
200	600062-0200-067
225	600062-0200-068
250	600062-0200-069
275	600062-0200-070
300	600062-0200-071
325	600062-0200-072
350	600062-0200-073
375	600062-0200-074
400	600062-0200-075
425	600062-0200-076
450	600062-0200-077
475	600062-0200-078
500	600062-0200-079
550	600062-0200-080
600	600062-0200-081
650	600062-0200-082
700	600062-0200-083
750	600062-0200-084
800	600062-0200-085
850	600062-0200-086
900	600062-0200-087
950	600062-0200-088
1000	600062-0200-089
1050	600062-0200-090
1100	600062-0200-091
1150	600062-0200-092
1200	600062-0200-093
1250	600062-0200-094
1300	600062-0200-095
1350	600062-0200-096
1400	600062-0200-097
1450	600062-0200-098
1500	600062-0200-099
1550	600062-0200-100
1600	600062-0200-101
1650	600062-0200-102
1700	600062-0200-103
1750	600062-0200-104
1800	600062-0200-105
1850	600062-0200-106
1900	600062-0200-107
1950	600062-0200-108
2000	600062-0200-109
2250	600062-0200-110
2500	600062-0200-111
2750	600062-0200-112
3000	600062-0200-113
3250	600062-0200-114
3500	600062-0200-115
3750	600062-0200-116
4000	600062-0200-117



# CARFIT lite: Profiles and support elements



ZEISS CARFIT Smart connecting system for optical markers

[back to Table of Contents](#)



Profile support,  
L100 mm, 45°

ZEISS no.: 600062-0210-409



Profile support,  
L150 mm, 45°

ZEISS no.: 600062-0210-408



Profile support,  
L200 mm, 45°

ZEISS no.: 600062-0210-410



Profile support,  
L100 mm, 60°

ZEISS no.: 600062-0210-412



Profile support,  
L150 mm, 60°

ZEISS no.: 600062-0210-411



Profile support,  
L200 mm, 60°

ZEISS no.: 600062-0210-413



Gusset plate,  
L100 mm, 45°

ZEISS no.: 600062-0210-415



Gusset plate,  
L150 mm, 45°

ZEISS no.: 600062-0210-414



Gusset plate,  
L200 mm, 45°

ZEISS no.: 600062-0210-416



Gusset plate,  
L100 mm, 60°

ZEISS no.: 600062-0210-418



Gusset plate,  
L150 mm, 60°

ZEISS no.: 600062-0210-417



Gusset plate,  
L200 mm, 60°

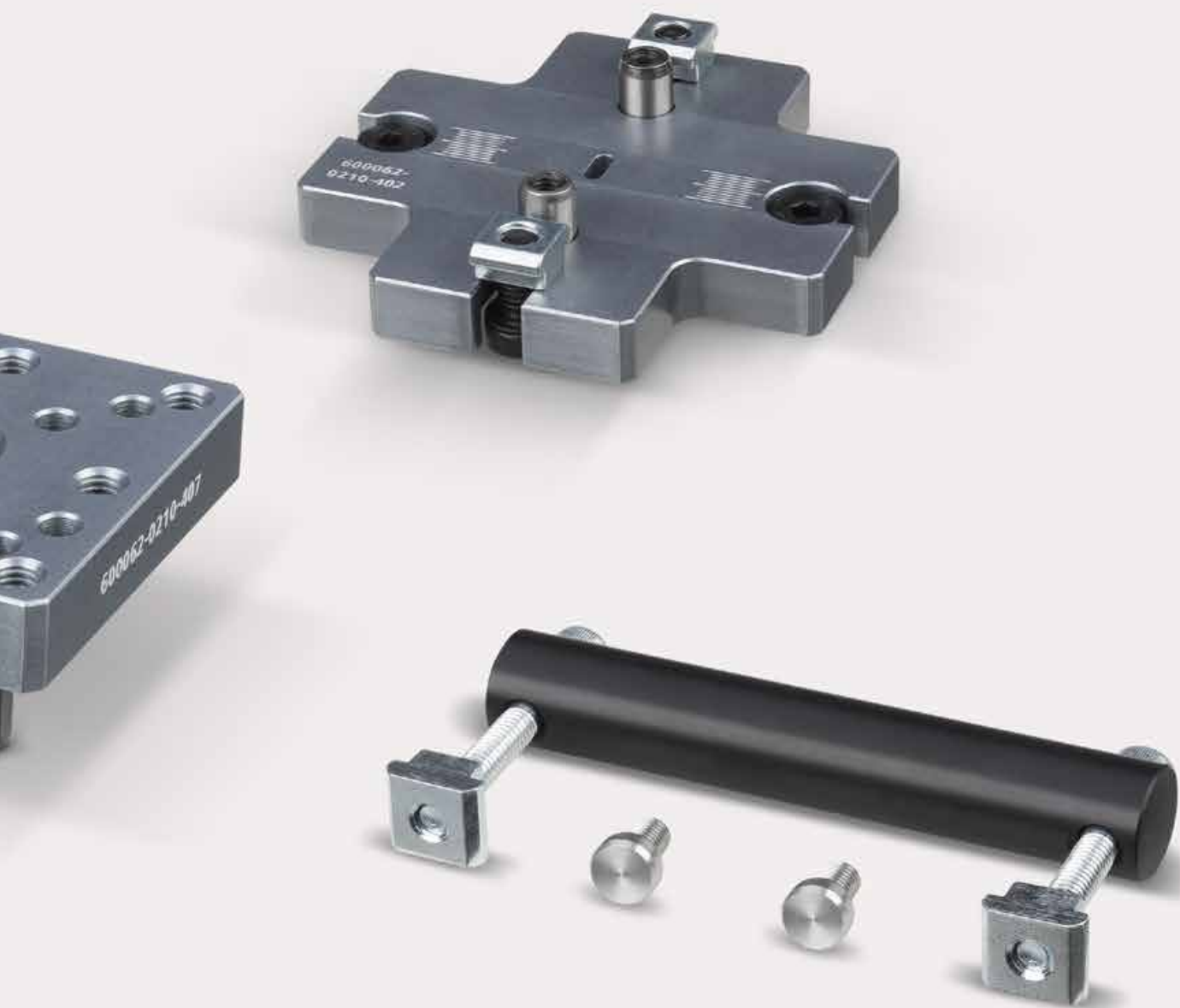
ZEISS no.: 600062-0210-419



Hinge,  
CARFIT lite

ZEISS no.: 600062-0210-563







Adapter plate head,  
50 on 50 mm

ZEISS no.: 600062-0210-401



Adapter plate head,  
50 on 60 mm

ZEISS no.: 600062-0210-399



Adapter plate head,  
50 on 80 mm

ZEISS no.: 600062-0210-400



Adapter plate cross,  
50 on 50 mm

ZEISS no.: 600062-0210-402



Adapter plate head,  
60 on 50 mm

ZEISS no.: 600062-0210-403



Adapter plate cross,  
50 on 60 mm

ZEISS no.: 600062-0210-404



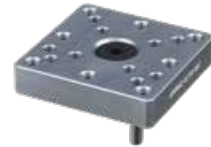
Adapter plate head,  
80 on 50 mm

ZEISS no.: 600062-0210-405



Adapter plate cross,  
50 on 80 mm

ZEISS no.: 600062-0210-406



Adapter plate head,  
for 2D- and 3D element,  
60 mm

ZEISS no.: 600062-0210-407



Adapter plate,  
for 2D- and 3D element,  
60 mm

ZEISS no.: 600062-0210-424



Adapter plate head,  
50 on 100 mm

ZEISS no.: 600062-0210-483



Adapter plate cross,  
50 on 100 mm

ZEISS no.: 600062-0210-484

# CARFIT lite: Connecting technology

ZEISS CARFIT Smart connecting system for optical markers

[back to Table of Contents](#)



Adapter plate cross,  
100 on 100 mm

---

ZEISS no.: 600062-0210-485



Connecting bolt,  
50 mm

---

ZEISS no.: 600062-0210-561



Connecting bolt,  
100 mm

---

ZEISS no.: 600062-0210-562



Profile connector head,  
50 mm

---

ZEISS no.: 000000-0603-726



Profile connector cross,  
50 mm

---

ZEISS no.: 000000-0626-715









2D adjustment element,  
60 mm

ZEISS no.: 600062-0210-475



Support block,  
60 mm, for 2D element

ZEISS no.: 600062-0210-474



Clamp flange plate,  
50 mm

ZEISS no.: 600062-0210-420



Clamp flange plate,  
50 mm,  
semi-finished part

ZEISS no.: 600062-0210-421



Base plate,  
50 x 50 mm

ZEISS no.: 600062-0210-486



Base plate,  
50 x 100 mm

ZEISS no.: 600062-0210-487



Cavity shim,  
1,00 mm

ZEISS no.: 600062-0210-478



Cavity shim,  
0,50 mm

ZEISS no.: 600062-0210-479



Cavity shim,  
0,25 mm

ZEISS no.: 600062-0210-481



Cavity shim,  
0,10 mm

ZEISS no.: 600062-0210-480



Clamp console,  
250 mm,  
semi-finished part

ZEISS no.: 600062-0210-422



End cap,  
50 x 50 mm

ZEISS no.: 600062-0210-488

# CARFIT lite: Accessories NEW

ZEISS CARFIT Smart connecting system for optical markers

[back to Table of Contents](#)



End cap,  
50 x 100 mm

ZEISS no.: 600062-0210-493



End cap,  
100 x 100 mm

ZEISS no.: 600062-0210-494



Alignment angle,  
50 mm,  
semi-finished part

ZEISS no.: 600062-0210-581



Sphere-shaped spindle,  
D20, (mount D10 / M8)

ZEISS no.: 600062-0210-564



Transport plate,  
50 x 100 mm

ZEISS no.: 600062-0210-579



Base plate round,  
50 mm

ZEISS no.: 600062-0210-580



Base plate for detachable caster wheel,  
50 x 100 mm

ZEISS no.: 600062-0001-257

# Index

Item	Page	Item	Page
<b>A</b>		<b>A</b>	
Adaptation angle .....	43	Alignment angle .....	56, 85
- 60 mm, M6 .....	43	- 50 mm, semi-finished part .....	85
- 60 mm, KM6 .....	43	- 60 mm, 3D, without borehole .....	56
- 80 mm, M6 .....	43	- 60 mm, without borehole .....	56
- 80 mm, KM6 .....	43	- 80 mm, 3D, without borehole .....	56
Adapter .....	50	- 80 mm, without borehole .....	56
- for reference sphere .....	50	Angle .....	72
Adapter plate .....	32, 42, 43, 52, 72, 80, 81	- octagonal .....	72
- 40 mm .....	42	Articulating element .....	34
- 40 mm, cross .....	42	- 60 mm .....	34
- 40 / 60 mm .....	42	- 80 mm .....	34
- 40 / 60 mm, cross .....	42	- 120 mm .....	34
- 50 mm, face .....	52	Attachment plate .....	52
- 50 on 50 mm, cross .....	80	- 50 mm, with M10 ring bolt .....	52
- 50 on 60 mm, cross .....	80	- 80 / 120 mm, with M10 ring bolt .....	52
- 50 on 80 mm, cross .....	80	<b>B</b>	
- 50 on 100 mm, cross .....	80	Ball bearing .....	17
- 50 on 50 mm, head .....	80	- M8 x 1 mm, D10, long .....	17
- 50 on 60 mm, head .....	80	- M8 x 1 mm, D10, short .....	17
- 50 on 80 mm, head .....	80	Ball bearing with magnet .....	17
- 50 on 100 mm, head .....	80	- M8 x 1 mm, D19, adjustable .....	17
- 60 mm, for 2D- and 3D element .....	80	- M8 x 1 mm, D27, adjustable .....	17
- 60 mm, head, for 2D- and 3D element .....	80	Base plate .....	57, 72, 84, 85
- 60 mm, cross .....	42	- 50 mm, for hole grid profile .....	57
- 60 mm, for octagonal pieces .....	72	- 50 mm, round .....	85
- 60 mm, KM6 .....	42	- 50 mm, with fastening hole, for hole grid profile .....	57
- 60 mm, M6 .....	42	- 50 x 50 mm .....	84
- 60 on 50 mm, head .....	80	- 50 x 100 mm .....	84
- 60 / 80 mm, cross .....	42	- 50 x 100 mm, for detachable caster wheel .....	85
- 60 / 80 mm, M6 .....	42	- 60 mm, face, for detachable caster wheel .....	57
- 80 mm, cross .....	43	- 60 x 80 mm, side, for detachable caster wheel .....	57
- 80 mm, cross, dual .....	42	- 80 mm, face, for detachable caster wheel .....	57
- 80 mm, KM6 .....	43	- 80 x 120 mm, for detachable caster wheel, for hole grid profile .....	57
- 80 mm, KM6, dual .....	42	- 80 mm, for hole grid profile .....	57
- 80 mm, M6 .....	42	- 90 x 90 x 12 mm, for profiles 60 x 60 .....	57
- 80 mm, for octagonal pieces .....	72	- 110 x 110 x 12 mm, for profiles 80 x 80 .....	57
- 80 on 50 mm, head .....	80	- 120 mm, for hole grid profile .....	57
- 80 / 60 mm, KM6 .....	43	- 250 x 250 mm (D1 = 18 mm), semi-finished part .....	57
- 80 / 120 mm, face .....	43	- 250 x 250 mm (D1 = 22 mm), semi-finished part .....	57
- 80 / 120 mm, KM6 .....	43	- 285 x 185 x 20 mm, semi-finished part .....	57
- 100 on 100 mm, cross .....	81	- 285 x 285 x 20 mm, SP, semi-finished part .....	57
- side, 120 mm .....	32	- 285 x 285 x 20 mm, WG, semi-finished part .....	57
Adjustment elements .....	24, 25	- for octagonal pieces .....	72
- Assembly part, 3D adjustment element, 50 mm .....	24	Base plate 60 .....	57, 58
- Assembly part, 3D adjustment element, 60 mm, cavity shim .....	25	- 130 x 130 x 20 mm, D12, M8 .....	57
- Assembly part, 3D adjustment element, 60 mm, ridge shim .....	25	- 130 x 130 x 20 mm, D12, M10 .....	58
- Assembly part, 3D adjustment element, 80 mm, cavity shim .....	25	Base plate 80 .....	58
- Assembly part, 3D adjustment element, 80 mm, ridge shim .....	25	- 130 x 130 x 20 mm, D12, M10 .....	58
- base plate, 3D adjustment element, 50 mm .....	24		
- base plate, 3D adjustment element, 60 mm .....	24		
- base plate, 3D adjustment element, 80 mm .....	24		

# Index

Item	Page	Item	Page
<b>B</b>		<b>C</b>	
Bearing disk	16	Clamp holder	11, 66
- D10 x 5 mm	16	- 80 mm, left	11
- D12 x 3 mm	16	- 80 mm, right	11
- D12 x 3 mm, semi-finished part, for contour support	16	- 100 mm, left	11
- D12 x 5 mm	16	- 100 mm, right	11
- D15 x 5 mm	16	- 120 mm, left	11
Bushing	56	- 120 mm, right	11
- D12 steel	56	- 140 mm, left	11
- D16 steel	56	- 140 mm, right	11
-		- 160 mm, left	11
		- 160 mm, right	11
		- Master screw	66
<b>C</b>		Clamping fork	12
Case	68	- 10 mm	12
- empty, for inspection adapter	68	Clamping sleeve with magnet	67
Cavity shim	28, 84	Clamping unit	59
- 0,1 mm	84	- for fixation unit (2 pieces)	59
- 0,25 mm	84	Clip mount	17
- 0,5 mm	84	Collet chuck	59
- 1,0 mm	84	Column	72, 73
- Various packages, closed spacer plate, for sale of individual components	28	- octagonal, 100 mm	72
Centering bolt	72, 73	- octagonal, 100 mm, for folding unit, unlocking	73
- tight, for octagonal pieces	73	- octagonal, 100 mm, on adapter plate for folding unit, unlocking	73
- wide, for octagonal pieces	72	- octagonal, 100 mm, with compensation	73
Clamp arm extension	11, 12	- octagonal, 150 mm	72
- 70 mm, clampable, for clamping fork 10 mm	12	- octagonal, 200 mm	72
- 80 mm	11	- octagonal, 300 mm	72
- 90 mm, with anti-twist device	12	- octagonal, 400 mm	72
- 100 mm	11	- octagonal, 500 mm	72
- 100 mm, clampable, for clamping fork 10 mm	12	Column support	38, 50
- 120 mm	11	- 30° profile	38
- 120 mm, with anti-twist device	12	- 45° profile	38
- 140 mm	11	- 60° profile	38
- 150 mm, with anti-twist device	12	- Universal, height 150 mm	38
- 160 mm	11	- Universal, height 255 mm	38, 50
- 180 mm, with anti-twist device	12	Connecting bolt	51, 81
Clamp console	10, 84	- 40 mm, KM10	51
- Base unit, foldable, 80 / 60 mm, left	10	- 40 mm, M6 center	51
- Base unit, slider (set: 2 units)	10	- 40 mm, M10	51
- Clamp console 1, semi-finished part	10	- 40 mm, M10 center	51
- Foldable, semi-finished part 1	10	- 45 mm, KM10, face, M10	51
- Foldable, semi-finished part 2	10	- 45 mm, M10, face, M10	51
- Semi-finished part, 200 mm	12	- 50 mm	81
- semi-finished part, 250 mm	84	- 50 mm, KM6	51
Clamp flange plate	84	- 50 mm, M6	51
- 50 mm	84	- 50 mm, KM10, face, M10	51
- 50 mm, semi-finished part	84	- 50 mm, M10, face, M10	51
Clamp elevation, for clamp holder	11	- 80 mm, KM10	51
Clamp flange plate	12	- 80 mm, M6	51
- 80 mm, semi-finished part	12	- 80 mm, M10	51
- size for hole grid profile	12		

Item	Page	Item	Page
<b>C</b>		<b>E</b>	
Connecting bolt .....	51, 81	Eccentric bolt .....	72
- 90 mm, M10 .....	51	- for octagonal pieces .....	72
- 100 mm .....	81	End cap .....	66, 84, 85
- 120 mm, KM10 .....	51	- 40 x 40 mm .....	66
- 120 mm, M10 .....	51	- 50 x 50 mm .....	84
Contour mount .....	20, 21	- 50 x 100 mm .....	85
- Assembly part, left, 60 mm, 10 LL, external (with 3D element) .....	20	- 60 x 60 mm (plastic) .....	66
- Assembly part, left, 60 mm, 10 LL (with 3D element) .....	20	- 80 x 80 mm (plastic) .....	66
- Assembly part, left, 80 mm, 10 LL .....	21	- 80 x 120 mm .....	66
- Assembly part, left corner, 60 mm, 10 LL, external (with 3D element) .....	20	- 100 x 100 mm .....	85
- Assembly part, right, 60 mm, 10 LL, external (with 3D element) .....	21	End piece .....	72
- Assembly part, right, 60 mm, 10 LL (with 3D element) .....	20	- octagonal .....	72
- Assembly part, right, 80 mm, 10 LL (with 3D element) .....	21	Extruded profiles .....	38, 76
- Assembly part, right corner, 60 mm, 10 LL, external (with 3D element) .....	20	- 40 x 40 mm, L = 1000 mm .....	38
Contour mount .....	20, 21	- 50 x 50 mm, L = 25 -2000 mm .....	76
- Base body, left, 60 mm, 10 LL, external (with 3D element) .....	20	- 50 x 100 mm, L = 25 -4000 mm .....	76
- Base body, left, 60 mm, 10 LL (with 3D element) .....	20	- 60 x 60 mm, L = 1000 mm .....	38
- Base body, left, 80 mm, 10 LL .....	21	- 80 x 80 mm, L = 1000 mm .....	38
- Base body, left corner, 60 mm, 10 LL, external (with 3D element) .....	21	- 80 x 120 mm, L = 1000 mm .....	38
- Base body, right, 60 mm, 10 LL, external .....	21	- 100 x 100 mm, L = 25 -4000 mm .....	76
- Base body, right, 60 mm, 10 LL (with 3D element) .....	20	- 120 x 120 mm, L = 1000 mm .....	38
- Base body, right, 80 mm, 10 LL .....	21	<b>F</b>	
- Base body, right corner, 60 mm, 10 LL, external (with 3D element) .....	20	Fastening bolt .....	56, 58
- Block, 80 mm .....	20	- Clamping bolt .....	56, 58
- Block, left, 60 mm .....	20	black, knurled knob, M8 / sleeve D11.5 .....	58
- Block, right, 60 mm .....	20	black, knurled knob, M10 / sleeve D11.5 .....	58
Coupling element .....	32	black, knurled knob, M12 / sleeve D15.5 .....	58
- Base body .....	32	black, star knob, M8 / sleeve D11.5 .....	56
- Main mount .....	32	black, star knob, M10 / sleeve D11.5 .....	56
- Side mount .....	32	black, star knob, M12 / sleeve D15.5 .....	56
Cross-piece .....	72	- Main mount .....	56, 58
- octagonal .....	72	green, knurled knob, M8 / sleeve D12H7 .....	58
Cross slide .....	32	green, knurled knob, M10 / sleeve D12H7 .....	58
- 60 mm, adjustable (2x linear slide) .....	32	green, knurled knob, M12 / sleeve D16H7 .....	58
- 60 mm, spring assembly (2x linear slide) .....	32	green, star knob, M8 / sleeve D12H7 .....	56
- 80 mm, adjustable (2x linear slide) .....	32	green, star knob, M10 / sleeve D12H7 .....	56
- 80 mm, spring assembly (2x linear slide) .....	32	green, star knob, M12 / sleeve D16H7 .....	56
- 120 mm, spring assembly (2x linear slide) .....	32	- Side mount .....	56, 58
<b>D</b>		red, knurled knob, M8 / sleeve D11.98H7 .....	58
DEA-FIVE adapter .....	33	red, knurled knob, M10 / sleeve D15.98H7 .....	58
- 60 mm .....	33	red, knurled knob, M12 / sleeve D15.98H7 .....	58
Detachable caster wheel .....	58	red, star knob, M8 / sleeve D11.98H7 .....	56
- (incl. base plate), 60 / 80 mm, for extruded profiles .....	58	red, star knob, M10 / sleeve D11.98H .....	56
- (incl. base plate), 80 / 120 mm, for hole grid profiles .....	58	red, star knob, M12 / sleeve D15.98H7 .....	56
Dial gauge holder .....	32		
- with pin for linear slides .....	32		
Diamond nut .....	42		

Item	Page	Item	Page
<b>F</b>		<b>H</b>	
Fastening bracket .....	52	Hole adapter plate .....	50, 52
- 40 mm .....	52	- 120 mm, BB80, M6 face .....	50
- 80 mm .....	52	- 120 mm, BB120, M6 .....	50
Flange clamp .....	16	- 120 mm, BB120, M6 face .....	50
Folding unit .....	73	- Long side, 50 mm .....	50
- for octagonal pieces .....	73	- Long side, 50 mm, semi-finished part .....	50
- octagonal .....	73	- SWE 80 mm, BB80, KM6 .....	50
Fork head .....	10	- SWE 80 mm, BB80, M6 .....	50
- 10 mm .....	10	Hole grid profile cap .....	66
- 15 mm .....	10	- 50 mm .....	66
- 15 mm, with anti-twist device .....	10	- 80 mm .....	66
- 20 mm .....	10	- 120 mm .....	66
- 20 mm, with anti-twist device .....	10	Hole grid profiles .....	46
- 25 mm .....	10	- 40 x 40 mm, L = 1000 mm .....	46
- 25 mm, with anti-twist device .....	10	- 50 x 50 mm, L = 1000 mm .....	46
- 30 mm .....	10	- 80 x 80 mm, L = 1000 mm .....	46
- 30 mm, with anti-twist device .....	10	- 120 x 120 mm, L = 1000 mm .....	46
Forklift shoe .....	67	Hydraulic elevating unit .....	62
- 60 / 80 mm .....	67	- Lift height 29 mm, for extruded profiles .....	62
- 60 / 80 mm, certified .....	67	- Lift height 29 mm, for hole grid profiles .....	62
		- Lift height 100 mm, for extruded profiles .....	62
		- Lift height 100 mm, for hole grid profiles .....	62
<b>G</b>		<b>I</b>	
Gauge storage box .....	67	Inspection adapter	
Gusset plate .....	77	- D25, assembly part, for locating bolt, (incl. magnets) .....	68
- L100 mm, 45° .....	77	- D30, assembly part, for locating bolt (incl. magnets) .....	68
- L100 mm, 60° .....	77	- D30, assembly part, for optical reference markers (incl. magnets) .....	68
- L150 mm, 45° .....	77	- D30, assembly part, taper centring, for boreholes Ø1.5 to Ø6 mm (incl. magnets) ...	68
- L150 mm, 60° .....	77	Inspection ruler .....	67
- L200 mm, 45° .....	77	- 0.5 mm .....	67
- L200 mm, 60° .....	77	- 1 mm .....	67
<b>H</b>		<b>L</b>	
Head element .....	73	Linear slide .....	32
- octagonal, reference cross .....	73	- 60 mm, adjustable .....	32
Head plate .....	17	- 60 mm, spring assembly .....	32
- 60 mm .....	17	- 80 mm, adjustable .....	32
- 80 mm .....	17	- 80 mm, spring assembly .....	32
Hinge .....	34, 77	- 120 mm, spring assembly .....	32
- Carfit Lite .....	77	Locating bolt .....	67, 68
- Quick change element, V3, 60 / 80 mm .....	34	- D5 for inspection adapter .....	67
Hole adapter plate .....	50, 52	- D6 for inspection adapter .....	67
- 40 mm .....	52	- D8 for inspection adapter .....	67
- 40 mm, BB40, M6 face .....	50	- D10 for inspection adapter .....	67
- 40 mm, M6 face .....	50	- D12 for inspection adapter .....	67
- 40 mm, semi-finished .....	52		
- 80 mm, BB60, M6 .....	50		
- 80 mm, BB60, M6 face .....	50		
- 80 mm, BB80, KM6 .....	50		
- 80 mm, BB80, M6 .....	50		



# Index

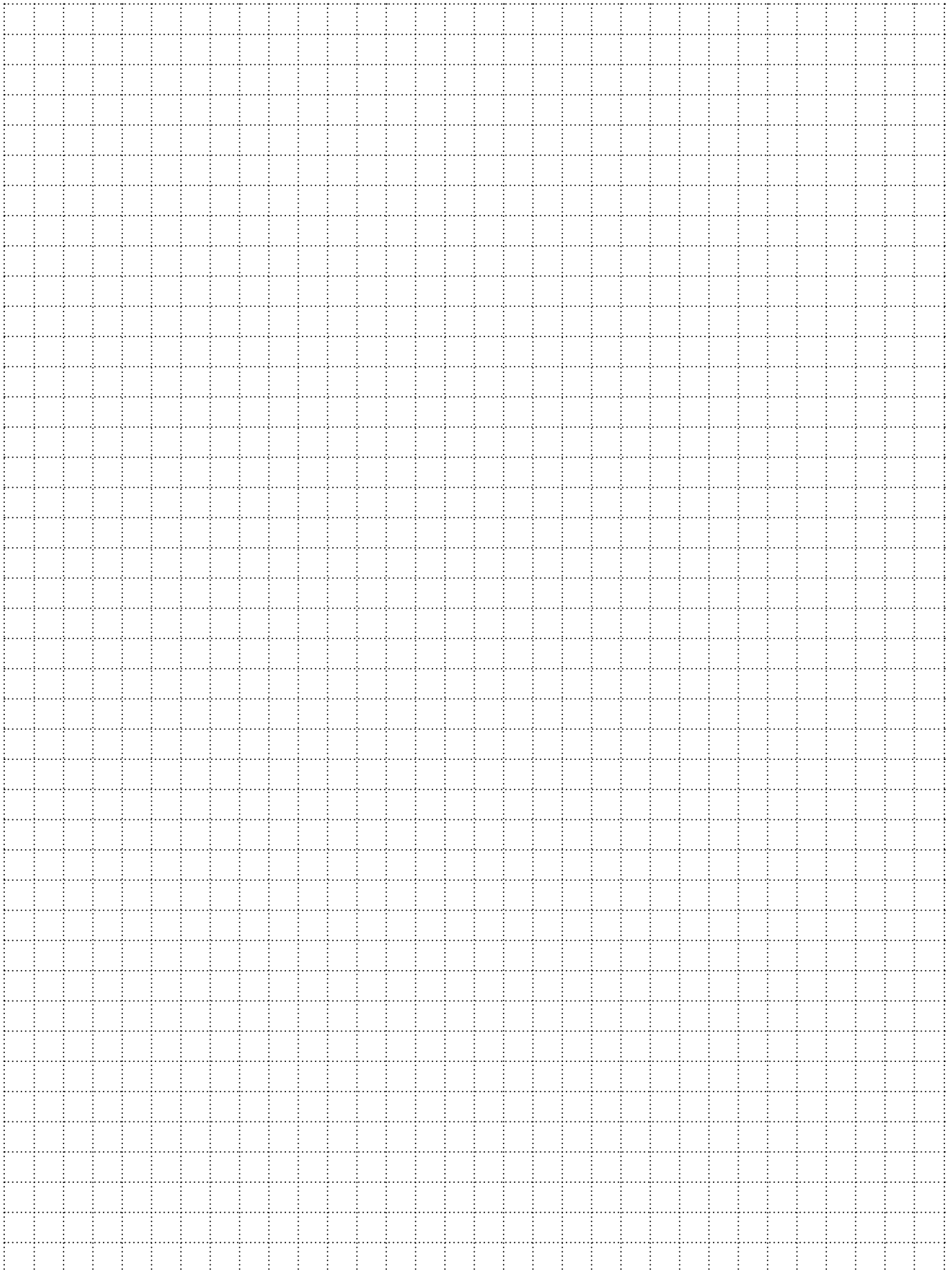
Item	Page	Item	Page
<b>L</b>		<b>P</b>	
Locating bolt	67, 68	Precision plate	52
- M4 for inspection adapter	67	- 40 mm	52
- M5 for inspection adapter	68	- 50 mm	52
- M6 for inspection adapter	68	- 80 mm	52
- M8 for inspection adapter	68	- 120 mm	52
- M10 for inspection adapter	68	Pressure spindle, spring-loaded	12
Locking device	34	Profile support	77
- quick change element V3, for 60 / 80 mm	34	- L100 mm, 45°	77
Locking pin	50	- L100 mm, 60°	77
- D20, with O-ring	50	- L150 mm, 45°	77
- for octagonal pieces	72	- L150 mm, 60°	77
<b>M</b>		- L200 mm, 45°	77
Master gauge	66	- L200 mm, 60°	77
- for dial gauge, variable	66	Profile connector	81
Master screw	17, 18	- 50 mm cross	81
- Base body, for contour support	17	- 50 mm head	81
- Crowned	18	Push-button reversal	66
- Crowned, with magnet	18	- Variant A	66
- Crowned, with magnet, long	18	- Variant B	66
- Crowned, with magnet, N20	18	<b>Q</b>	
- Crowned, without thread, long	18	Quick change element, V1	33
- Crowned, with thread M4	18	- Lower part, 60 / 80 mm, on 3D adjustment element 80 mm	33
- Crowned, with thread M4, long	18	- Lower part, 60 mm	33
- Flat, M4	18	- Lower part, 80 mm	33
- Flat, with magnet	18	- Upper part, 60 mm, KM6, round bolt	33
- Flat, with magnet, long	18	- Upper part, 60 mm, KM6, strut bolt	33
- Flat, with magnet, N20	18	- Upper part, 80 mm, KM6, round bolt	33
- Flat, with thread M4, long	18	- Upper part, 80 mm, KM6, strut bolt	33
- Narrow, crowned with magnet, long	18	- Upper part, 60 mm, M6, round bolt	33
- Narrow, crowned with magnet, short	18	- Upper part, 60 mm, M6, strut bolt	33
- Narrow, flat with magnet, long	18	- Upper part, 80 mm, M6, round bolt	33
- Narrow, flat with magnet, short	18	- Upper part, 80 mm, M6, strut bolt	33
Mounting plate	62	Quick change element, V3	33, 34
- on hydraulic pump, for extruded profile	62	- Lower part, 60 mm, for extruded profile	33
- on hydraulic pump, for hole grid profile	62	- Lower part, 80 mm, for extruded profile	34
<b>O</b>		- Lower part, 80 mm, for hole grid profile	33
Octagonal	73	- Upper part, 60 mm	33
- 8K octagonal	73	- Upper part, 80 mm	33
<b>P</b>		<b>R</b>	
Pin bushing	42	Reference mark holder	73
- D9, with O-ring	42	- for octagonal pieces	73
- D12.5, with O-ring	42	Retrofit kit: caster wheel	67
Plug nut	68	Ridge shim	28
- M4, for boreholes Ø5 to Ø6.9 mm	68	- Various packages, open spacer plate, for sale of individual components	28
- M5, for boreholes Ø6.5 to Ø8.9 mm	68	Round bolt	59
- M6, for boreholes Ø8 to Ø10 mm	68	- for fixation unit	59

Item	Page	Item	Page
<b>S</b>		<b>S</b>	
Screw joint	67	Support block	16, 84
- Dial gauge	67	- 50 mm (for 3D element)	16
Screw joint set	59	- 50 mm (for 3D element, CML)	16
- Clamping system	59	- 60 mm (for 2D element)	84
Sheet thickness compensating element	17	- 60 mm (for 3D element)	21
- Assembly part, semi-finished, 1-slider	17	- 80 mm (for 3D element)	21
Sliding unit	19, 20	- center, 60 mm, stainless steel	21
- 80 mm, for ball bearing M8 x 1 mm, (without 3D element)	20	- center, 80 mm, stainless steel	21
- Center, 60 mm, short, 60 mm, short, (without 3D element), spring-loaded	20	- left, 60 mm, stainless steel	21
- Center, 60 mm, short, with setting pin, (with 3D element)	19	- left, 80 mm, stainless steel	21
- Center, 60 mm, short, with setting pin, (without 3D element)	19	- right, 60 mm, stainless steel	21
- Center, 60 mm, with setting pin, (without 3D element)	19	- right, 80 mm, stainless steel	21
- Center, 80 mm, (with 3D element)	20	- Single block tower, 60 mm	21
- Center, 80 mm, (with bolt platform)	20	- Single block tower, 80 mm	21
- Left, 60 mm, short, with setting pin, (with 3D element)	19	Support screw	16
- Left, 60 mm, short, with setting pin, (without 3D element)	19	- crowned, M8 x 1 mm, D10 x R9, with SW6	17
- Left, 60 mm, with setting pin, (with 3D element)	19	- M8 x 1 mm, D6, with SW6	16
- Left, 60 mm, with setting pin, (without 3D element)	19	- M8 x 1 mm, D10, with SW6, long	16
- Left corner, 60 mm, with setting pin, (with 3D element)	19	- M8 x 1 mm, D10, with SW6, short	16
- Left corner, 60 mm, with setting pin, (without 3D element)	19	- M8 x 1 mm, D16, with SW13	16
- Right, 60 mm, short, with setting pin	19	- M8 x 1 mm, D20, with SW13	16
- Right, 60 mm, short, with setting pin, (with 3D element)	19	Support sphere	16
- Right, 60 mm, with setting pin, (with 3D element)	19	- Center, 60 mm (without 3D element), with ball bearing	16
- Right, 60 mm, with setting pin, (without 3D element)	19	Swivel unit	73
- Right corner, 60 mm, with setting pin, (with 3D element)	19	- octagonal	73
- Right corner, 60 mm, with setting pin, (without 3D element)	19	- octagonal, unlocking	73
SPC folding element, centered	67	<b>T</b>	
Special pin	32	Test mandrel	67
- for cross slide	32	- Grip	67
Sphere-shaped spindle	66, 85	T- nut	42
- D14, (D8 mount)	66	T-piece	72
- D20, (D8 mount)	66	- octagonal	72
- D20, (D10 / M8 mount)	85	Transport plate	56, 85
- D20, (D12.5 / M6 mount)	66	- 50 x 100 mm	85
- D30, (D12.5 / M6 mount)	66	- 60 x 80 mm	56
Sphere-shaped spindle cover	66	<b>U</b>	
- D20	66	Underfloor hook clamp, configuration upon request	13
Spring assembly	16	Universal hinge, for octagonal pieces	73
- Retrofit kit for sliding unit	16	<b>Symbols</b>	
Spring-loaded pressure piece	12	2D adjustment element	84
Storage cube	68	- 60 mm	84
- made of plastic for the quick change element V1	68	3D holder	10
Strut bolt	59	- Base unit	10
- for fixation unit	59	- Locating bolt	10
Support	17		
- Master screw, contour, semi-finished part, 30 x 30 x 50 mm	17		
Support block	16, 84		

# ZEISS CARFIT standard components

Notes

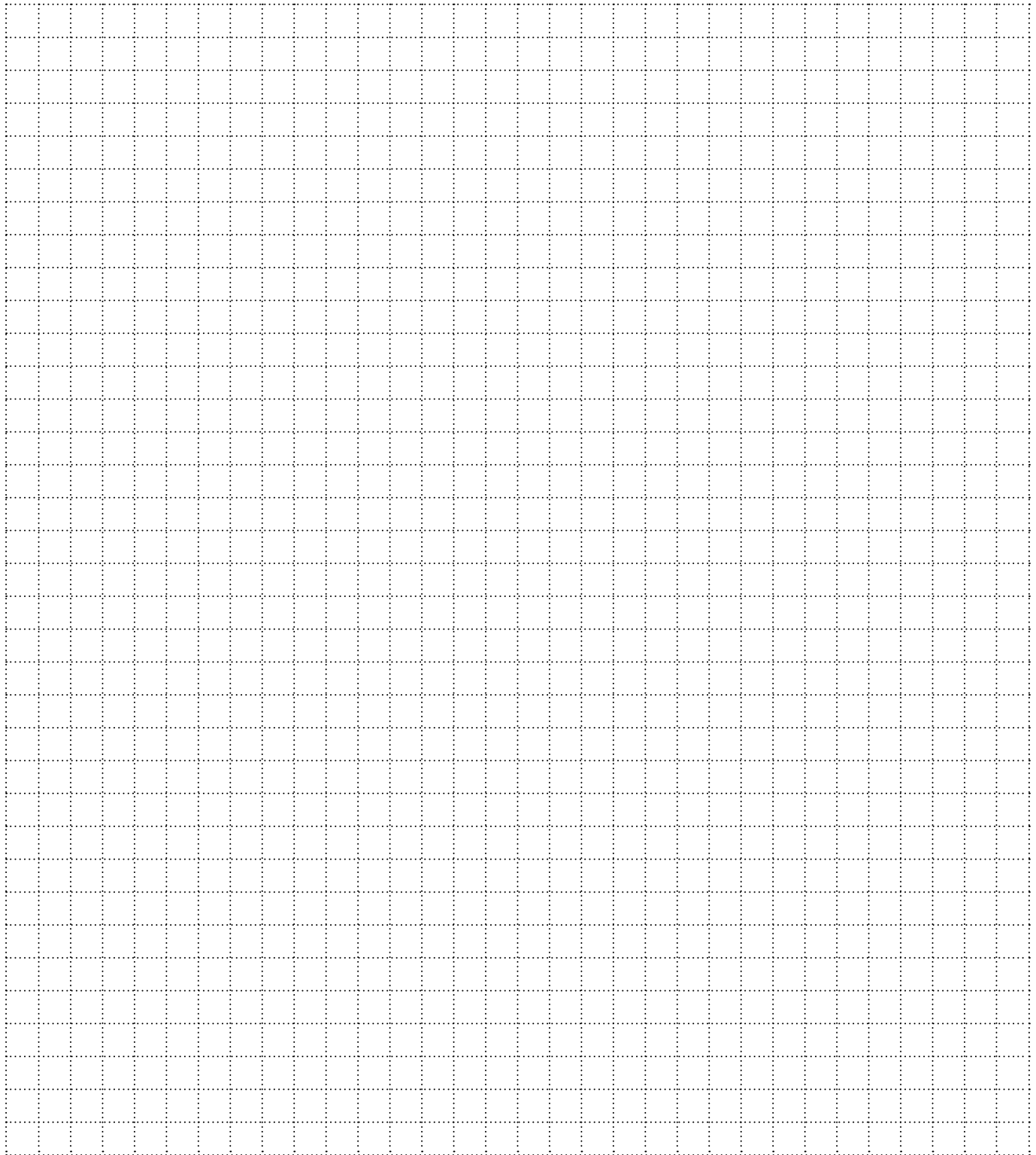
[back to Table of Contents](#)



# ZEISS CARFIT standard components

Notes

[back to Table of Contents](#)



## **Terms and conditions of payment**

---

- 30 days net
- Minimum order value: €100
- Minimum quantity surcharge: €30

## **Terms and conditions of delivery**

---

- FCA Carl Zeiss Fixture Systems GmbH
- Auf Rodert 6
- 66636 Tholey / Germany
- Incoterms 2010

**Carl Zeiss**

Fixture Systems GmbH  
Auf Rodert 6  
66636 Tholey  
Germany

Phone: +49 (0) 68 53 50 12-0  
Fax: +49 (0) 68 53 50 12-31

E-mail: [carfitvertrieb.metrology.de@zeiss.com](mailto:carfitvertrieb.metrology.de@zeiss.com)  
[www.zeiss.com/carfit](http://www.zeiss.com/carfit)