

Upgrade to productivity.



ZEISS VoluMax F1500 thunder



ZEISS VoluMax F1500 thunder

Reliably detect defects inside components without sacrificing maximum throughput? This is possible with the computed tomography system ZEISS VoluMax F1500 thunder, which is the first of its kind to be fully integrated into the production line, allowing fastest 100% inspection.



Full flexibility

The extremely configurable system with the individually adaptable conveyor belt can be flexibly integrated into your production.



High throughput

In less than 60 seconds – depending on the part also significantly faster – a wide range of parts can be scanned with the inline CT – for highest throughput in the production line!



Space-saving construction

With a footprint of only 4.42 m², ZEISS VoluMax F1500 thunder requires very little of the valuable space in production. This keeps the total cost of ownership low.



Fast loading

In production it is important to keep loading times to a minimum to achieve maximum throughput. Due to the innovative throughput concept of ZEISS VoluMax F1500 thunder, the system can be loaded and unloaded in as little as eight seconds.



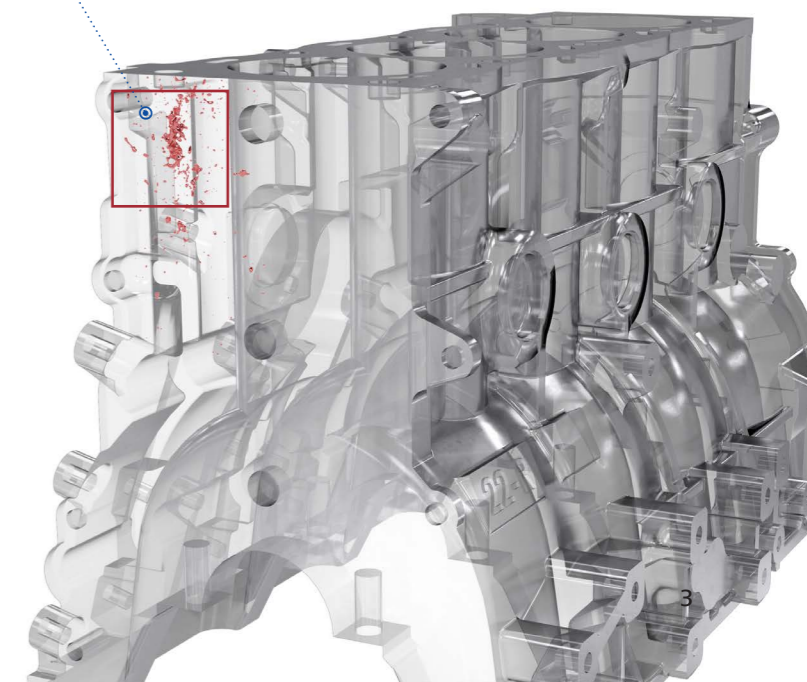
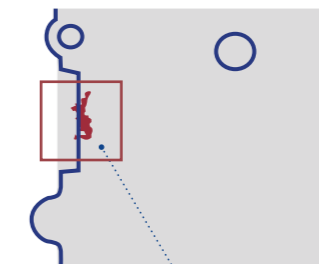
Service

Thanks to ZEISS' worldwide presence, local support can be promptly provided. In this way, we can guarantee fastest service, maintenance and installation – not least because of the required spare parts being always in stock and can, therefore, be delivered quickly.



Software

Unleash the full potential of your quality assurance with the latest machine-learning software: ZEISS Automated Defect Detection (ZADD) software not only detects, localizes and classifies defects, but also evaluates on the basis of the CAD model whether the defect poses a problem after further processing steps and if the component has to be sorted out.



ZEISS VoluMax F1500 thunder – Features

X-ray tube	X-ray voltage max.	in kV	225
Measuring range in the image without image field extension	Diameter max.	in mm	305
	Height max.	in mm	305
Flat-panel detector	Number of pixels		3072 x 3072*
Maximum 3-D resolution		in μm	400**
Max. workpiece mass		in kg	50
Ambient temperature		in $^{\circ}\text{C}$	15 – 40

*Typically operated in 2x2 binning mode: Number of pixels: 1024 x 1024

**In binning mode.

